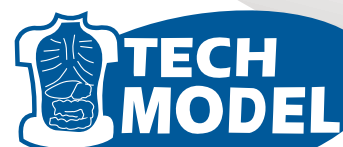
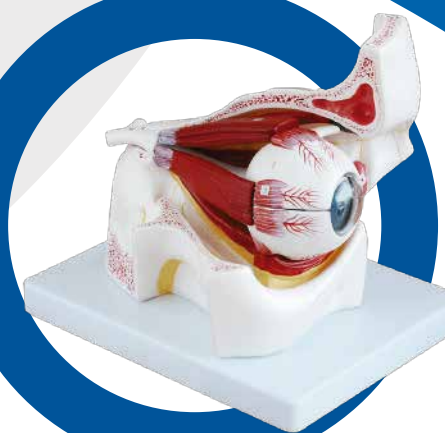
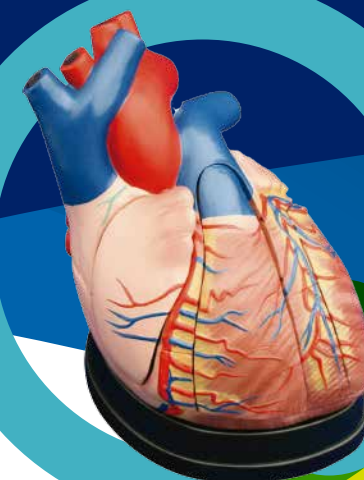


PRODUCT CATALOGUE



DIRECCIÓN: Avenida Emancipación N° 605 – Lima Jirón Moquegua 600, Lima
TELÉFONO: (01) 424 2524 – (01) 332 1539 | RPM: #970097122
EMAIL: info@andinaeirl.com | andinaeirl@gmail.com

www.andinaeirl.com

➤ TM-101 Life-Size Skeleton 180CM Tall

This life-size articulated adult plastic skeleton is ideal for teaching the basics of human anatomy. The arms and the legs are removable for study. Features nerve branches, vertebral artery and herniated lumbar disc. The skull includes movable jaw, cut calvarium, suture lines and 3 removable lower teeth. Made of washable and unbreakable PVC plastic. Size: 180CM.

Packing: 1pcs/carton, 100x46x29cm, 13kgs



◀ TM-102 85CM Skeleton

This half-size skeleton contains 200 bones of an adult human. The skull features movable jaw, removable calvarium. Arms are movable and legs are removable. Size: 85CM.

Packing: 6pcs/carton, 74x33x52.5cm, 14kgs

✓ TM-101A Skeleton with Muscles and Ligaments 180CM Tall

Based on TM-101, this model is painted to show the muscles and ligaments. The left side of the skeleton shows the points of origin (red) and the points of insertion (blue) of the muscles. Size:180CM.

Packing: 1pcs/carton, 100x46x29cm, 14kgs





◀ TM-102A 85cm Skeleton with Spinal Nerves

This model features spinal column, nerve roots, vertebral artery, a herniated disc, cartilage highlighted in green, removable 3-piece skull and extremities. Size: 85CM.

Packing: 6pcs/carton, 74x33x52.5cm, 14kgs

▶ TM-102B 85CM Skeleton with Nerves and Blood Vessels

This model depicts the position, course and distribution of main vessel and peripheral nerves of the human body. Size: 85CM

Packing: 6pcs/carton, 74x33x52.5cm, 15kgs





◀ TM-102C 85cm Skeleton with Painted Muscles

Based on TM-102, this model is painted to show the muscles. The left side of the skeleton shows the points of origin (red) and the points of insertion (blue) of the muscles. Size: 85CM.

Packing: 6pcs/carton, 74x33x52.5cm, 14kgs

▶ TM-103 45CM Mini Skeleton

This miniature skeleton model features a movable jaw on springs, removable calvarium, arms are movable, legs are removable for individual study. Size: 45CM.

Packing: 24pcs/carton, 69x57x34cm, 15kgs





◀ TM-104 Life-Size Skull

This life-size adult skull features a movable jaw, cut calvarium, suture lines and 3 removable lower teeth - incisor, cuspid and molar. Dissected into 3 parts. Size: 19x15x21cm.

Packing: 18pcs/carton, 53x39x55cm, 18kgs

▶ TM-104B Life-Size Skull with Painted Muscles

Based on TM-104D skull model, this model is painted to show the muscles. The left side of the skull shows the points of origin (red) and the points of insertion (blue) of the muscles.

Packing: 18pcs/carton, 49x45x54cm, 19kgs



◀ TM-104C Life-Size Skull with Colored Bones

This is advanced model of TM-104 life-size skull, bones painted in different colors for precise study. Can be disassembled into 3 parts. Size: 19x15x21CM.

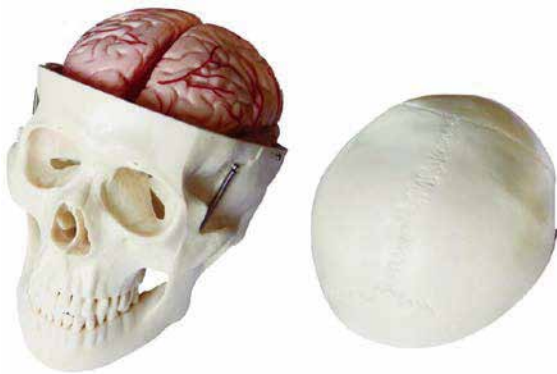
Packing: 18pcs/carton, 53x39x55cm, 18kgs

▶ TM-104D Deluxe Life-Size Skull Style D

This new developed life-size skull features a movable jaw, cut calvarium and suture lines. Have a more obvious manifestations of bone. Can be disassembled into 3 parts. Made of PVC.

Packing: 18pcs/carton, 49x45x54cm, 19kgs





TM-104E Skull Model with 8 Parts Brain

This model is based on TM-104D, includes 8 parts brain: frontal and parietal lobe, temporal and occipital lobe, encephalic trunk and cerebellum.

Packing: 18pcs/carton, 49x45x54cm, 23kgs

TM-135 Skull with Cervical Spine

This skull is flexibly mounted on a cervical spine. Also represent the hindbrain, spinal cord, cervical nerves, vertebral arteries, basilar artery and rear cerebral arteries.

Packing: 10pcs/carton, 88x39x28cm, 14kgs



TM-106 Miniature Plastic Skull

This model shows the major structure of the different bones of the skull. The calvarium can be removed and the mandible is spring hanged to view the bone structures of the mouth. Size: 10x8x10CM.

Packing: 32pcs/carton, 62x29x29cm, 9kgs



◀ TM-107 Life-Size Vertebral Column

This model shows all significant features of each vertebra, including spinal cord, nerve roots, the vertebral artery, a herniated disc and vertebral notch etc. Special features include: flexible vertebral column, sacrum, occipital bone, vertebral artery, all nerve branches and herniated lumbar disc.

Packing: 2pcs/carton, 80x32x39cm, 7kgs



◀ TM-107A Vertebral Column with Painted Muscles

Based on TM-107, this model is painted to show the muscles. The left side of the vertebral column shows the points of origin (red) and the points of insertion (blue) of the muscles.

Packing: 2pcs/carton, 80x32x39cm, 7kgs

▶ TM-107C Didactic Vertebral Column

This model is upgraded from TM-107, and features different sections of the spinal column in different color: cervical vertebrae, thoracic vertebrae, lumbar vertebrae, sacrum and the coccyx.

Packing: 2pcs/carton, 80x32x39cm, 7kgs





◀ TM-105 Life-Size Vertebral Column with Pelvis

This model shows all significant features of each vertebra, including spinal cord, nerve roots, the vertebral artery, a herniated disc and vertebral notch etc. Special features include: flexible vertebral column complete with pelvis, sacrum, occipital bone, vertebral artery, all nerve branches and herniated lumbar disc.

Packing: 2pcs/carton, 80x32x39cm, 9kgs



◀ TM-105A Vertebral Column with Pelvis and Painted Muscles

Based on TM-105, this model is painted to show the muscles. The left side of the vertebral column shows the points of origin (red) and the points of insertion (blue) of the muscles.

Packing: 2pcs/carton, 80x32x39cm, 9kgs

▶ TM-105C Didactic Vertebral Column with Pelvis

This model is upgraded from TM-105, and features different sections of spinal column in different color: cervical vertebrae, thoracic vertebrae, lumbar the vertebrae, sacrum and the coccyx.

Packing: 2pcs/carton, 80x32x39cm, 9kgs





◀ TM-126 Life-Size Vertebral Column with Pelvis and Femur Heads

This model shows all significant features of each vertebra, including spinal cord, nerve roots, the vertebral artery, a herniated disc and vertebral notch etc. Special features include: flexible vertebral column complete with pelvis, sacrum, occipital bone, femur heads, vertebral artery, all nerve branches and herniated lumbar disc.

Packing: 2pcs/carton, 88x32x39cm, 10kgs



◀ TM-126A Vertebral Column with Pelvis and Femur Heads and Painted Muscles

Based on TM-126, this model is painted to show the muscles. The left side of the vertebral column shows the points of origin (red) and the points of insertion (blue) of the muscles.

Packing: 2pcs/carton, 88x32x39cm, 10kgs

▶ TM-126C Didactic Vertebral Column with Pelvis and Femur Heads

This model is upgraded from TM-126, and features different sections of the spinal column in different color: cervical vertebrae, thoracic vertebrae, lumbar vertebrae, sacrum and the coccyx.

Packing: 2pcs/carton, 88x32x39cm, 10kgs





◀ TM-109 Life-Size Shoulder Joint

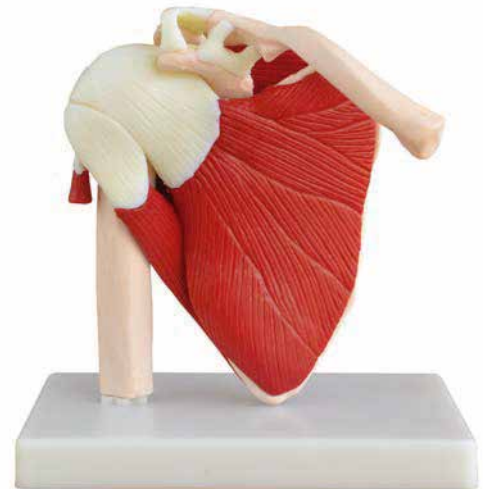
Demonstrates abduction, adduction, anteversion, retroversion and internal / external rotation. Include flexible, artificial ligaments. Life-size, on stand. Size: 17.5x15x21CM.

Packing: 10pcs/carton, 74x43x29cm, 8kgs

▶ TM-109A Life Size Muscled Shoulder Joint

This life size right shoulder includes: infraspinatus, subscapularis, supraspinatus, and teres major and minor muscles; acromion, clavicle, humerus, scapula bones and the related ligaments and tendons.

Packing: 10pcs/carton, 74x43x29cm, 12kgs



◀ TM-110 Life-Size Hip Joint

Demonstrate abduction, anteversion, retroversion, and internal / external rotation. Include flexible, artificial ligaments. Life-size, on stand. Size: 21x19x28CM.

Packing: 10pcs/carton, 82x44x33cm, 12kgs



◀ TM-111 Life-Size Knee Joint

Demonstrate abduction, anteversion, retroversion, internal / external rotation. Include flexible, artificial ligaments. Life-size, on stand. Size: 12x12x33CM.

Packing: 10pcs/carton, 77x32x36cm, 10kgs

▶ TM-112 Life-Size Elbow Joint

Demonstrate abduction, anteversion, retroversion, internal / external rotation of the radius. Include flexible, artificial ligaments. Life-size, on stand. Size: 17x14.5x24CM.

Packing: 10pcs/carton, 74x43x29cm, 6kgs



◀ TM-113 Life-Size Foot Joint

Demonstrate all the foot functionality and the external anatomical structures. Made of PVC plastic, life size, on stand. Size: 12x22x27CM.

Packing: 10pcs/carton, 55x35x33cm, 8kgs



◀ TM-113A Life-Size Foot Joint with Ligaments

Demonstrate all of foot functionality and the external anatomical structures. Include flexible, artificial ligaments. Made of PVC plastic, natural size, on stand. Size: 12x22x27CM.

Packing: 10pcs/carton, 55x35x33cm, 9kgs

▶ TM-114 Life-Size Hand Joint

Demonstrate all the hand functionality and the external anatomical structures. Made of PVC plastic, life size. on stand. Size: 11.5x8x24.5CM.

Packing: 12pcs/carton, 66x28x27cm, 4.5kgs



◀ TM-114A Life-Size Hand Joint with Ligaments

Demonstrate all the hand functionality and the external anatomical structures. Include flexible, artificial ligaments. Made of PVC plastic, life size, on stand. Size: 11.5x8x24.5CM.

Packing: 12pcs/carton, 66x28x27cm, 5kgs



◀ **TM-115 Life-Size Pelvis with 5pcs Lumbar Vertebrae**



◀ **TM-115A Half-Size Pelvis with 5pcs Lumbar Vertebrae**

Consist of hip bone, sacrum with coccyx and 5 lumbar vertebrae. On stand.

TM-115 Packing: 8pcs/carton, 58x45x50cm, 17kgs

TM-115A Packing: 20pcs/carton, 50x35x42cm, 9kgs

- **TM-116 Lumbar Set (2 pcs)**
- **TM-117 Lumbar Set (3 pcs)**
- **TM-118 Lumbar Set (4 pcs)**

Life-size lumbar vertebrae are shown with normal intervertebral disc and spinal cord with nerve roots. On stand.

TM-116 Packing: 32pcs/carton, 62x29x29cm, 15kgs

TM-117 Packing: 20pcs/carton, 50x35x42cm, 10kgs

TM-118 Packing: 20pcs/carton, 50x35x42cm, 11kgs



◀ **TM-119 Life-Size Lumbar Vertebrae with Sacrum & Coccyx and Herniated Disc**



◀ **TM-119A Mini Lumbar Vertebrae with Sacrum & Coccyx and Herniated Disc**

Consist of the 5 lumbar vertebrae with intervertebral discs, sacrum with flap, coccyx, spinal nerves and dura mater of spinal cord. On stand.

TM-119 Packing: 10pcs/carton, 74x43x29cm, 12kgs

TM-119A Packing: 32pcs/carton, 62x29x29cm, 10kgs



▲ TM-121 Life-Size Upper Extremity

Life-size arm, either left or right is available. Mounted on wire.

Packing: 25pairs/carton, 66x24x30cm, 17kgs



▲ TM-122 Life-Size Lower Extremity

Life-size leg, either left or right is available. Mounted on wire.

Packing: 5pairs/carton, 77x33x24cm, 14kgs



▲ TM-123 Adult Male Pelvis



▲ TM-124 Adult Female Pelvis

The size of these two models are just the same as the realities and made of PVC plastic. Comparing a male pelvis with a female one, the differences between these two can be listed as follow:

	Male	Female
Pelvis shapes:	Long and narrow	Short and broad
Pelvis cava:	Like a funnel	Like a barrel
Aperture pelvis superior:	Heart-like	Rounded
Sacrum:	Long and narrow	Broad and short
Angles of pelvis arch:	70-75 degree	90-100 degree
Symphysis pubica:	Long and narrow	Short and broad

TM-123 Packing: 10pcs/carton, 82x44x33cm, 13kgs

TM-124 Packing: 10pcs/carton, 74x43x29cm, 12kgs

➤ TM-120 Thoracic Spinal Column

This model consists of the 12 thoracic vertebrae with intervertebral discs, thoracic nerves and spinal cord, on stand.

Packing: 10pcs/carton, 74x43x29cm, 6kgs



◀ TM-125 Female Pelvic Muscles and Organs

This model is designed as an aid to the teaching of anatomy of female pelvis in middle institutes. It demonstrates pelvic muscles and pelvic organs as a whole. Life size.

Packing: 10pcs/carton, 74x43x29cm, 16kgs

➤ TM-127 Birth Demonstration Model

This model consists of 2 innominate bones, sacrum, coccyx, with fetal skull which is firmly connected with the model by means of a flexible metal tube which can be fixed in any position.

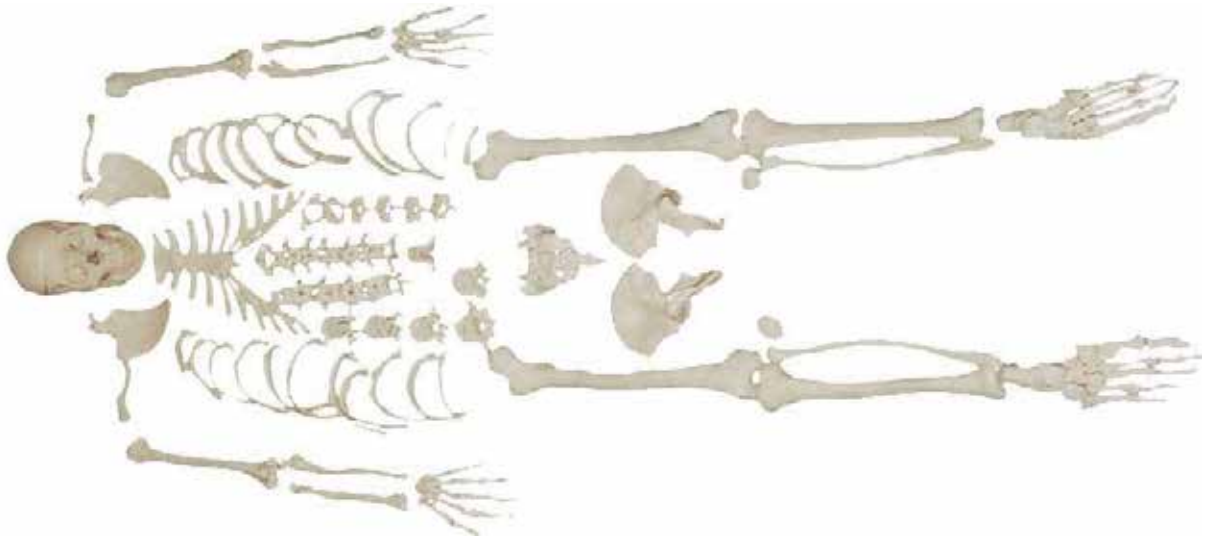
Packing: 8pcs/carton, 58x45x50cm, 15kgs



◀ TM-128 Life-Size Pelvis with 2pcs Lumbar Vertebrae

Consist of hip bone, sacrum with coccyx and 2 lumbar vertebrae.

Packing: 10pcs/carton, 82x44x33cm, 16kgs



⬆ TM-130 Disarticulated Skeleton with Skull

Life-size, disarticulated adult skeleton includes 3-part skull, left hand and left foot on wire.

Packing: 1 pcs/carton, 63x28x20cm, 9kgs

➤ TM-133 Cervical Vertebral Column with Neck Artery

Consisted of occipital plate, the 7 cervical vertebrae with intervertebral discs, cervical nerves, vertebral arteries and spinal cord. On stand.

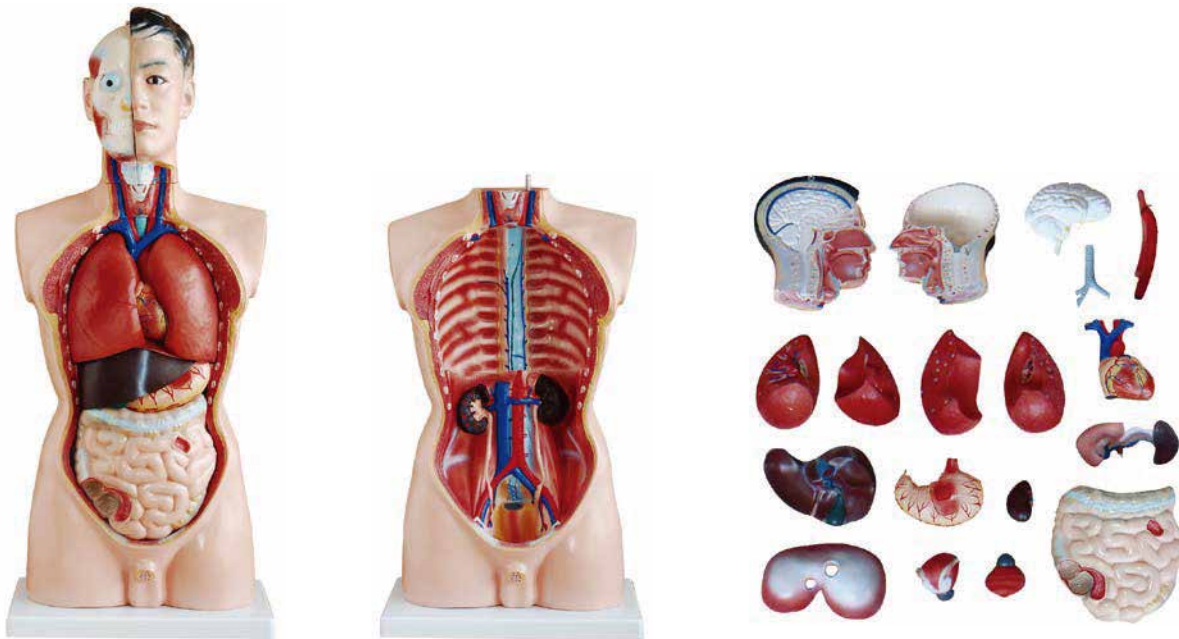
Packing: 20pcs/carton, 50x35x42cm, 9kgs



⬅ TM-134 Cutaway Osteoporosis

Consist of 3 medially divided lumbar vertebrae with intervertebral discs. For comparison, the upper section shows healthy bone structure, The middle section shows osteoporotic bone structure and the lower section shows advanced osteoporotic bone structure with flattened plates, deformation and decreased mass. For detailed study the vertebrae can be removed from the stand.

Packing: 32pcs/carton, 62x29x29cm, 14kgs



▲ TM-201 85CM Male Torso 19 Parts

This is a full-size male torso. Hand painted and meticulously assembled to simulate human anatomy. Dissects into 19 parts: torso, head (2 parts), brain, lung (4 parts), heart, trachea, esophagus and descending aorta, diaphragm, stomach, duodenum with pancreas and spleen, intestines, kidney, bladder (2 parts) and liver. Mounted on plastic base. Size:85CM.

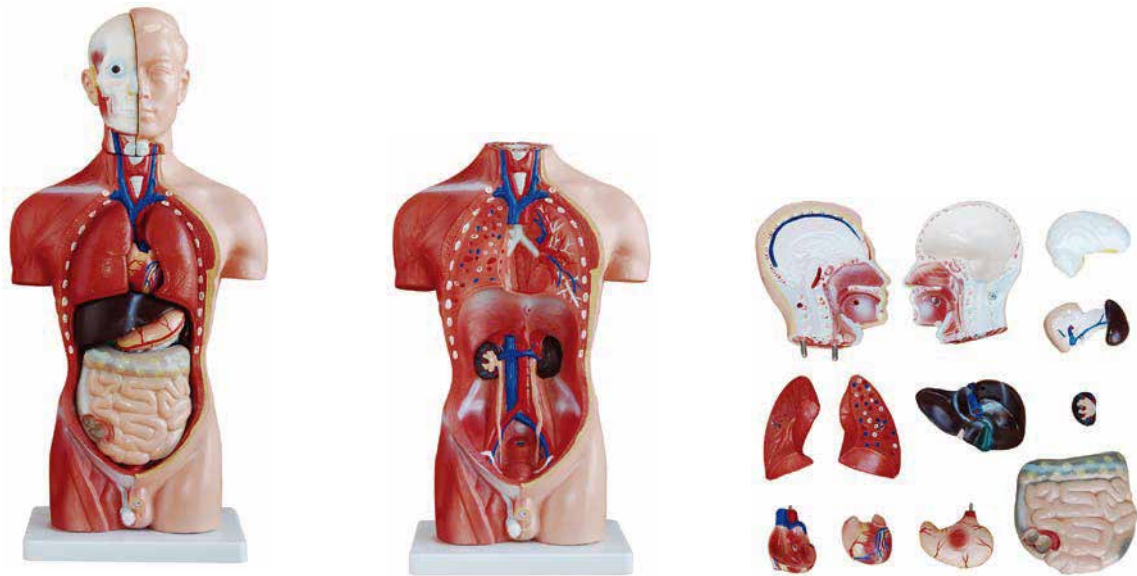
Packing: 1pcs/carton, 88x39x30cm, 10kgs



▲ TM-203 26CM Torso 15 Parts

This most popular educational torso features 15 parts, including torso, brain (2 parts), cut calvarium, heart, lung (4 parts), stomach, diaphragm, liver, heart, trachea & esophagus & aorta, pancreas and spleen. Size:26CM.

Packing: 24pcs/carton, 58x45x39cm, 18kgs



TM-202A 42CM Male Torso 13 Parts

This male torso features 13 parts, including torso, head (2 parts), brain, lung (2 parts), heart (2 parts), stomach, liver, kidney, pancreas and spleen, intestine. Made of PVC plastic. Mounted on plastic base. Size: 42CM.

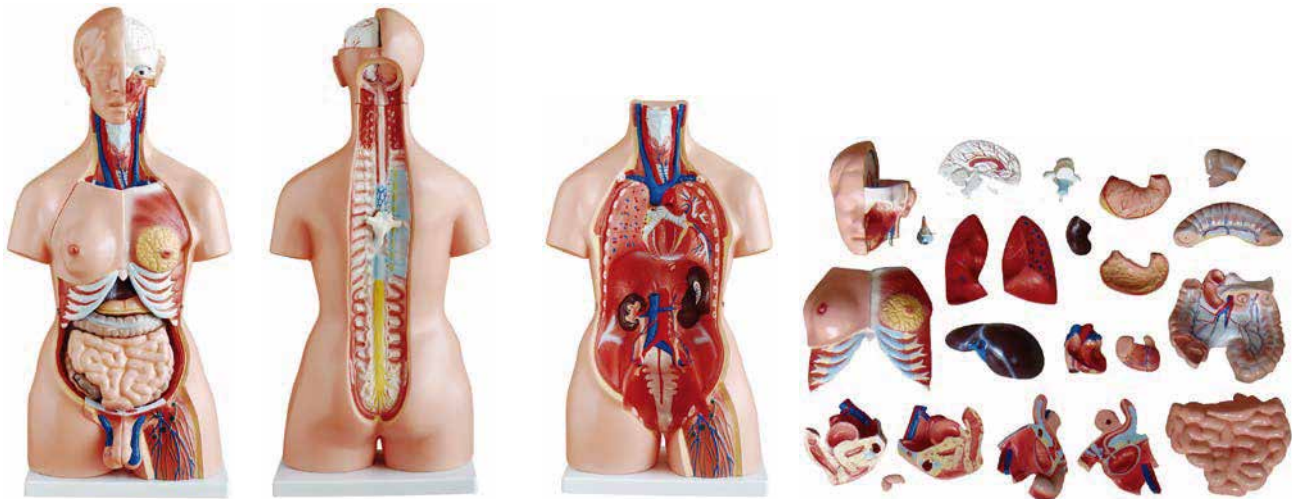
Packing: 6pcs/carton, 49x45x42cm, 11kgs



TM-202B 42CM Female Torso 15 Parts

This female torso features 15 parts, including torso, head (2 parts), brain, lung (2 parts), heart (2 parts), stomach, liver, kidney, pancreas and spleen, intestine, female genitalia (2 parts). Made of PVC plastic. Mounted on plastic base. Size: 42CM.

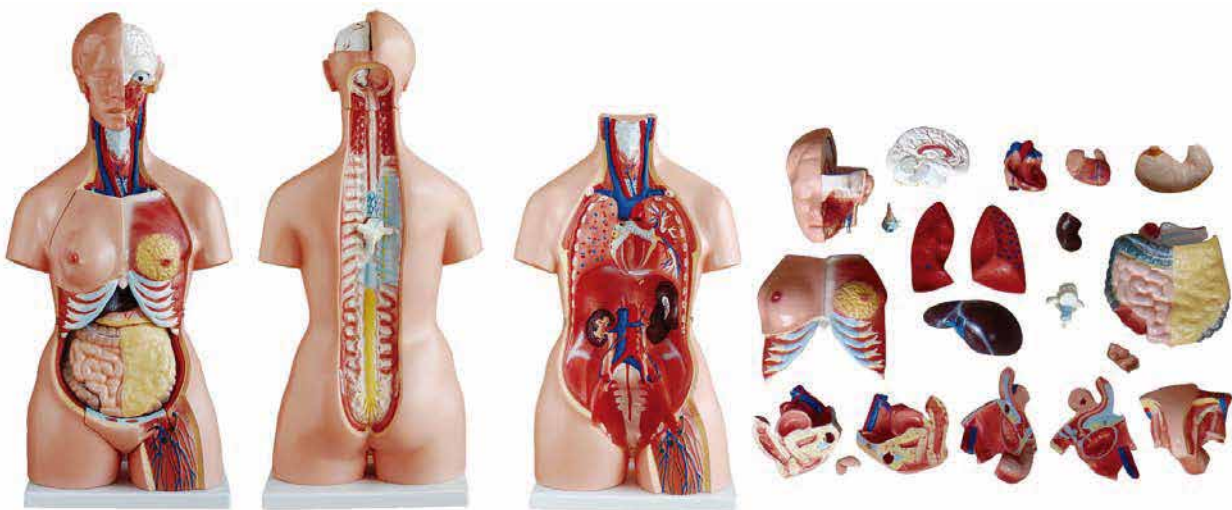
Packing: 6pcs/carton, 49x45x42cm, 11kgs



▲ TM-204 85CM Unisex Torso 23 Parts

This outstanding torso features an exposed spine with removable vertebra and spinal cord segments, a female breast plate and interchangeable male and female genitalia. The female organs include a fetus in the womb. Dissectible into 23 parts: torso, female breast plate, head, eyeball, brain, vertebra spinal nerves, lung (2 parts), heart (2 parts), liver, kidney, stomach (2 parts), intestines (4 parts), male genitalia (2 parts), female genitalia with fetus (3 parts). Made of PVC plastic. Mounted on a plastic base. Size: 85CM.

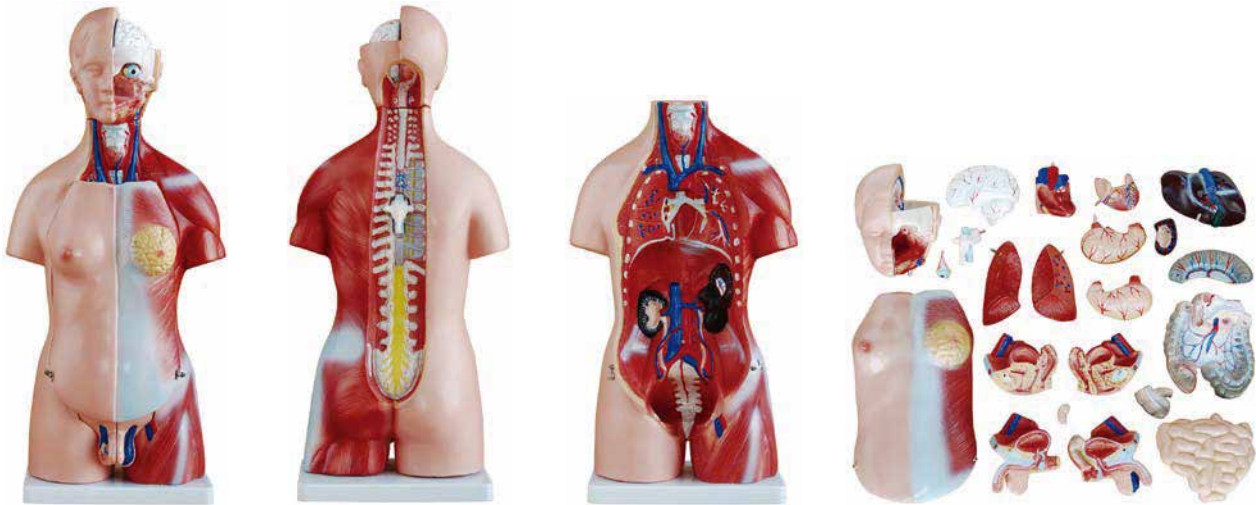
Packing: 1pcs/carton, 91x44x36cm, 11kgs



▲ TM-204A 85CM Tri-sex Torso 21 Parts

This torso is based on TM-204, add none sex genitalia. Dissected into 21 parts: torso, female breast plate, head, eyeball, brain, vertebra spinal nerves, lung (2 parts), heart (2 parts), liver, kidney, stomach, intestines (2 parts), male genitalia (2 parts), female genitalia with fetus (3 parts), none sex genitalia. Made of PVC plastic. The stomach parts and intestine parts can be replaced by the ones of TM-204. Mounted on base. Size: 85CM.

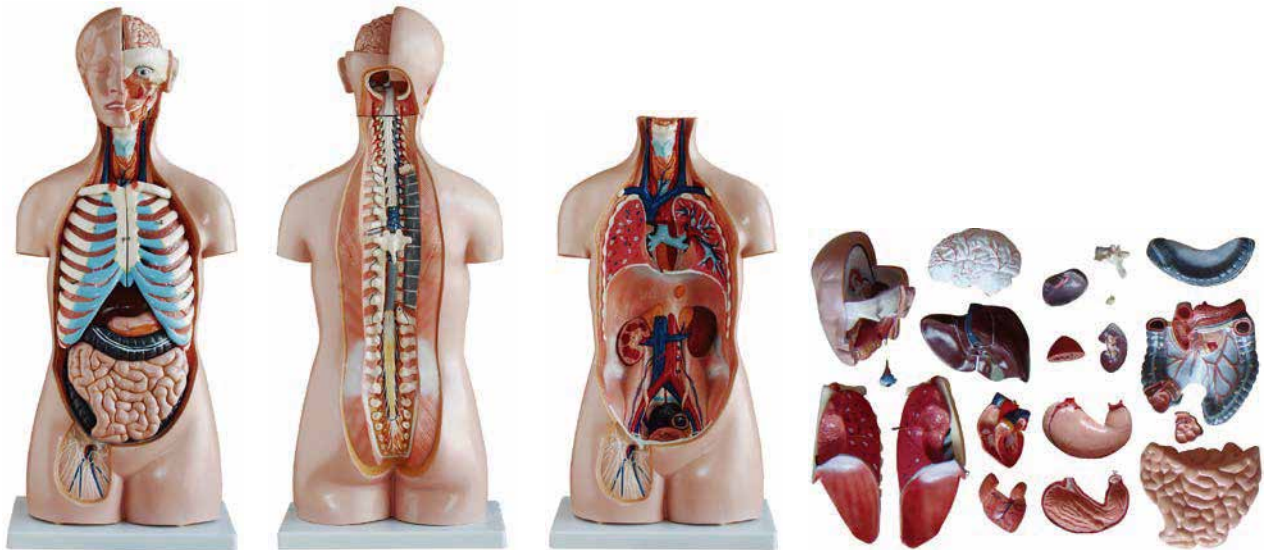
Packing: 1pcs/carton, 91x44x36cm, 11kgs



TM-205 45CM Unisex Torso 23 Parts

This unisex torso features the same as TM-204 but half size, offering an outstanding educational value. Dissected into 23 parts: torso, female, breast plate, head, eyeball, brain, vertebra spinal nerves, lung (2 parts), heart (2 parts), liver, kidney, stomach (2 parts), intestines (4 parts), male genitalia (2 parts), female genitalia with fetus (3 parts). Made of PVC plastic. Mounted on plastic base. Size: 45CM.

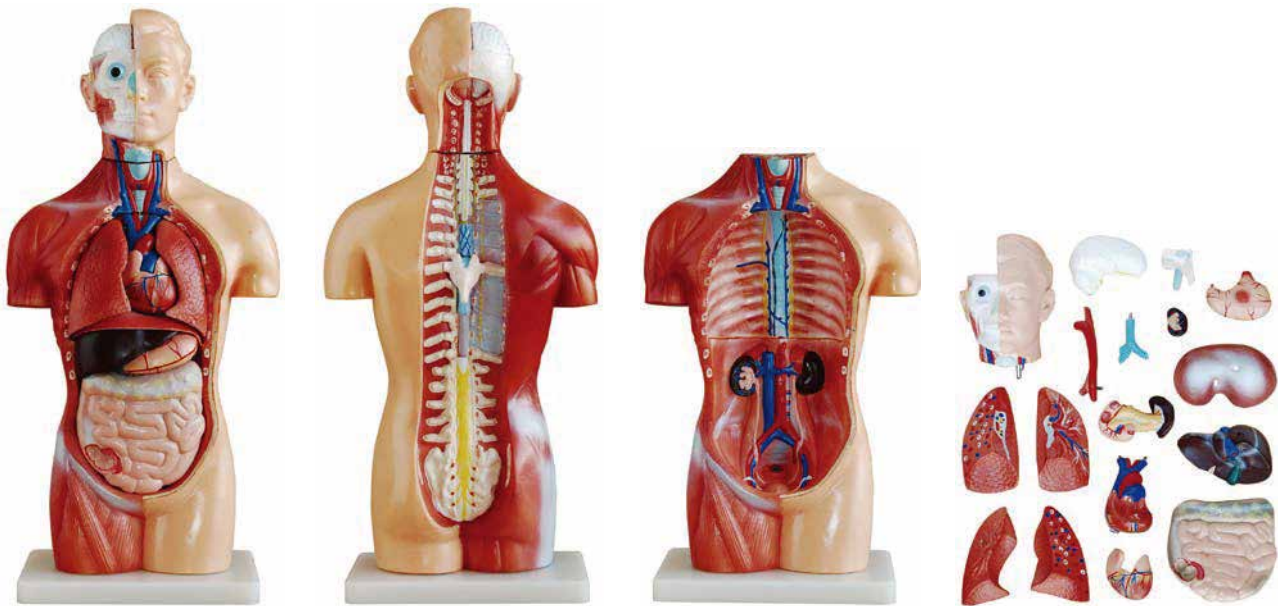
Packing: 6pcs/carton, 59x56x55cm, 18kgs



TM-206 85CM Sexless Torso 20 Parts

This sexless model including 20 dissectible parts: torso, head, eye, brain, lung with sternum and rib attachments (2 parts), heart (2 parts), stomach (2 parts), liver, spleen, kidney, intestine (4 parts), urinary bladder, vertebra spinal nerves (2 parts). Open back. Mounted on plastic base. Size: 85CM.

Packing: 1pcs/carton, 91x44x36cm, 10kgs



TM-207 42CM Sexless Torso 18 Parts

This sexless model including 18 dissectible parts:torso, head, brain, trachea, esophagus and descending aorta, diaphragm, lung (4 parts), heart (2 parts), stomach, liver, kidney, pancreas and spleen, intestine, vertebra spinal nerves. Open back. Mounted on plastic base. Size:42CM.

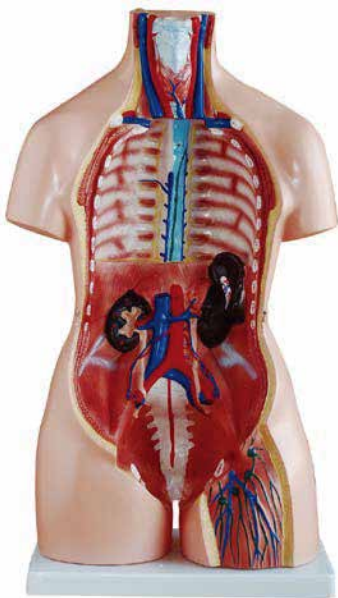
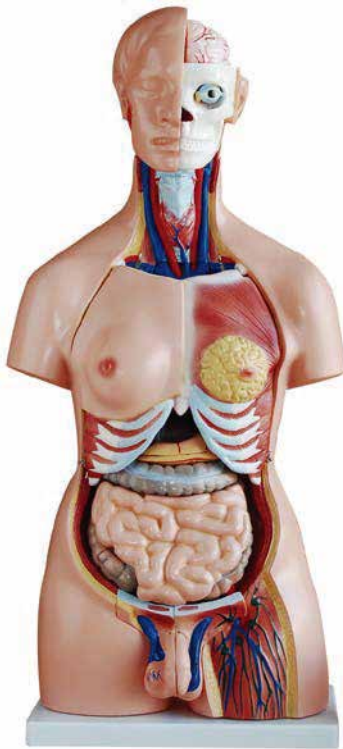
Packing: 6pcs/carton, 59x56x55cm, 14kgs



TM-209 55CM Unisex Torso 20 Parts

This unisex torso including 20 parts: torso, head, eyeball, brain, lung (2 parts), heart (2 parts), liver, gallbladder, kidney, stomach (2 parts), intestines (2 parts), male genitalia (2 parts), female genitalia (2 parts) and vertebra spinal nerves. Size: 55CM.

Packing: 4pcs/carton, 61x51x35cm, 14kgs



TM-208 85CM Unisex Torso 40 Parts

This unisex torso including 40 parts: torso, female breast plate, head, eyeball, brain (8 parts), vertebra spinal nerves (4 parts),lung (4 parts), heart (2 parts),trachea, esophagus and descending aorta, diaphragm,liver, kidney, stomach (2 parts), intestines (4 parts),male genitalia (4 parts), female genitalia with fetus (3 parts). Size: 85CM.

Packing: 1pcs/carton, 91x44x36cm, 11kgs



◀ TM-301 Magnified Human Larynx Model

A functional model that demonstrates movements of the epiglottis and cartilages in the voice box. It helps the students to require and understanding of the morphology and structure of the respiratory tract and phonetic organ. Dissectible into 3 parts, 3 times enlarged. Size: 11.5x11x24CM.

Packing: 12pcs/carton, 66x28x27cm, 8kgs

▶ TM-302 Magnified Pulmonar Alveoli Model

The model shows the small branches of principal bronchus:

1. Section of bronchiole of no cartilage.
 2. The relation between pulmonary alveoli and terminal bronchiole.
 3. The structure of alveolar sac and alveolar duct.
 4. The capillary rete in the alveolar septa.
- Size: 26x15x35CM

Packing: 4pcs/carton, 81x41x29 cm, 8kgs



◀ TM-305 Expansion Model of Human Teeth

This model shows the morphological differences of the incisor, canine and molar teeth. Dissections of the canine and molar teeth demonstrate the structure of the enamel, dental pulp cavity. 3pcs/set. 12 times enlarged.

Packing: 10sets/carton, 82x44x33cm, 24kgs

▶ TM-306 Stomach Model

With the longitudinal section, the model shows the structures of the gastric folds, pyloric valve, pyloric sphincter muscles, gastric mucosa and the transitional mucosa of the gastric-esophagus. Made of hard plastic and magnified 2 times of the natural size.

Packing: 10pcs/carton, 55x49x34cm, 13kgs





TM-303A Giant Ear Model

This model shows three main structural parts of the hearing organ (external ear, middle ear, internal ear) and the position of the equilibrium organ of human body. 5 times enlarged. Size: 42x24x16CM

TM-303A dissectible into 4 parts

TM-303C dissectible into 6 parts.

TM-303A Packing: 6pcs/carton, 55x47x57cm, 15kgs

TM-303C Packing: 6pcs/carton, 55x47x59cm, 15kgs



TM-303C New Style Giant Ear Model



TM-303B Middle Ear Model

This model shows all major structures related to hearing and balance. Dissectible into 2 parts, 3 times enlarged. Mounted on plastic base. Size: 32x16x11CM.

Packing: 10pcs/carton, 73x32x42cm, 11kgs

TM-303D Desktop Ear Model

Representation of the outer, middle, and inner ear. 1.5 times enlarged. On stand.

Packing: 32pcs/carton, 62x29x29cm, 13kgs





◀ TM-304 Brain Model

Demonstrate external features of human brain as a whole, as well as the relations between the component portions. Dissectible into 3 parts. On stand. Size: 18.5x14x13.5CM.

Packing: 18pcs/carton, 53x39x55cm, 15kgs



◀ TM-304A New Style Brain Model

Demonstrate external features of human brain as a whole, as well as the relations between the component portions. Dissectible into 3 parts. Size: 18.5x14x13.5CM. On stand.

Packing: 18pcs/carton, 53x39x55cm, 15kgs



⬆ TM-308 Brain with Arteries

Demonstrate external features of human brain and its arterial supply as a whole, as well as the relations between their component portions. External features of the brain: cerebral hemisphere, brain stem, cerebellum. The arterial supply of the brain: sources, vertebral, internal carotid arteries, arterial supply of the cerebellum and cerebrum. Dissectible into 8 parts. On stand. Size: 18.5x14x13.5CM.

Packing: 18pcs/carton, 53x39x55cm, 16kgs



◀ TM-307 Jumbo Heart Model

This model shows the external features and internal structures of the heart and its relation with the large blood vessels. A clearer conception of the routes of the systemic and pulmonary circulation can be obtained. Dissectible into 3 parts, 4 times enlarged. Made of PVC plastic. Size: 25x23x23CM.

Packing: 8pcs/carton, 58x45x50cm, 16kgs

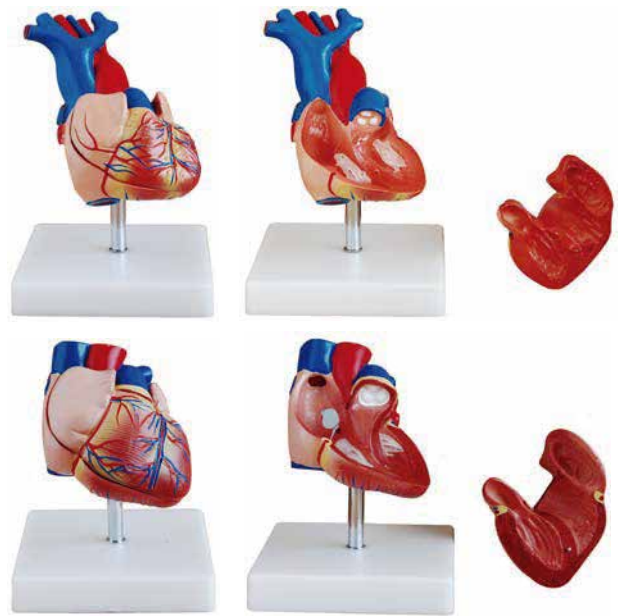
▶ TM-307A Life-Size Heart Model

These two models show the anatomy of human heart with ventricles, atriums, valves, veins, and the aorta in great anatomical detail. The front heart wall is removable to view the chambers and internal structures. Dissectible into 2 parts.

TM-307A Packing: 50pcs/carton, 66x30x38cm, 25kgs

TM-307B Packing: 32pcs/carton, 53x30x41cm, 16kgs

▶ TM-307B New Style Life-Size Heart Model



◀ TM-307C New Style Jumbo Heart Model

This model shows the anatomy of human heart with aortic arch, coronal section of atrium and ventricle, valves, and veins in great anatomical detail. Dissectible into 3 parts, 4 times enlarged.

Packing: 8pcs/carton, 58x45x50cm, 17kgs

▶ TM-307D Middle Heart Model

This model shows external features and internal structures of heart and its relation between large blood vessels. Dissectible into 5 parts, 3 times enlarged.

Packing: 8pcs/carton, 50x40x47cm, 12kgs





◀ TM-309 Nasal Cavity

This model shows the external and internal structures of the nasal cavity.

1. External nose: shows the section of the nasal bones and cartilages.
2. Nasal cavity: on the lateral nasal wall show the superior, middle and inferior nasal conchae project medially into the nasal cavity forming the superior, middle and inferior nasal meatuses.
3. Paranasal sinuses: shows the frontal, sphenoid and maxillary sinuses.

Magnified 1/2 the natural size. Made of PVC.

Packing: 20pcs/carton, 54x28x21cm, 6kgs

▶ TM-310-1 Kidney Model (1 part)

The coronary section of the right kidney shows the renal hilus, renal blood vessels, ureter, renal pelvis of the kidney, the renal substance is demonstrated by its medulla and cortex, medullary pyramid, papillae etc. 2 times enlarged. Size: 20x10x4CM. On stand.

Packing: 20pcs/carton, 50x35x42cm, 11kgs



◀ TM-310-2 Kidney Model (2 parts)

The coronary section of the right kidney shows the renal hilus, renal blood vessels, ureter, renal pelvis of the kidney, the renal substance is demonstrated by its medulla and cortex, medullary pyramid, papillae etc. 2 times enlarged. Size: 20x10x7CM. On stand.

Packing: 20pcs/carton, 50x35x42cm, 13kgs

▶ TM-310-3 Human Kidney with Adrenal Gland

This model features the kidney with adrenal gland, renal and adrenal vessels and upper portion of the ureter. Dissected into 2 parts to reveal the cortex medulla, vessels and renal pelvis. Life size.

Packing: 32pcs/carton, 62x29x29cm, 15kgs





◀ TM-311 Liver, Pancreas and Duodenum Model

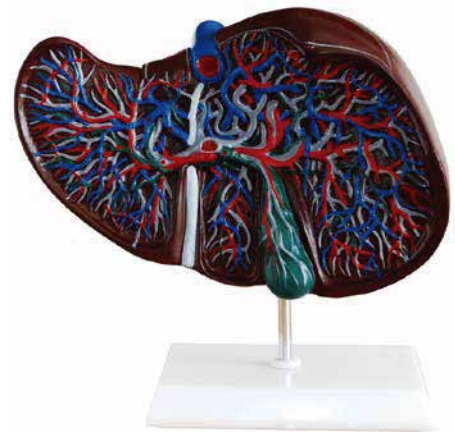
This model demonstrates the liver, spleen, blood vessels and pancreas. External structures are illustrated as well as the pancreatic duct of the pancreas. Also shows the abdominal aorta and inferior vena cava. Dissectible into 3 parts. Size: 23x12.5x26.5CM.

Packing: 18pcs/carton, 53x39x55cm, 17kgs

▶ TM-312 Liver Model

This model shows the basic anatomical structures of the liver. The complex vessels network in the opened liver, displayed in different colors in the liver model: hilus vessels, the extra-hepatic and intra-hepatic bile ducts. On stand.

Packing: 12pcs/carton, 50x35x42cm, 11kgs



◀ TM-315 Digestive System

This life-size digestive system model demonstrates the entire digestive system in graphic relief. It features: nose, mouth cavity and pharynx, esophagus, GI tract, liver with gallbladder, pancreas and spleen. The duodenum, caecum and rectum of the digestive system are opened. Dissectible into 3 parts. Mounted on baseboard.

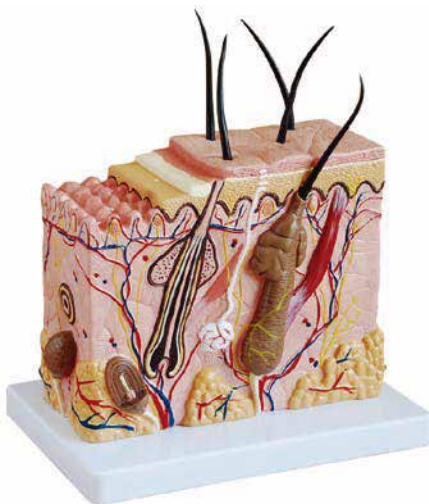
Packing: 2pcs/carton, 91x33x27cm, 9kgs



⬆ TM-313 Enlarged Skin Model

A greatly enlarged (105 times) cross sectional view of the human skin showing three layers and a close-up view of a hair follicle, sweat gland, fatty tissue and more. Front, side and back view. Not dissectible. Size: 27x10x31CM.

Packing: 5pcs/carton, 88x38x38cm, 10kgs



⬅ TM-313-2 Skin Block Model

This model shows a section of human skin in three dimensional forms. Hair, sebaceous and sweat glands, receptors, nerves and vessels are shown in detail. 70 times enlarged.

Packing: 5pcs/carton, 70x27x25cm, 7kgs

➤ TM-313-3 Skin Section Model

This model shows layers of skin, first rudiments of hair, sweat gland, sense organs of skin. Connected with side hinges. On base.

Packing: 5pcs/carton, 97x27x29cm, 8kgs



➤ TM-316 Giant Eye Model

The different parts of the eyeball model are detachable to show the following structures.

1. Tunica external: showing cornea and sclera with attachments of ocular muscles and optic nerve
 2. Tunica media: showing the iris, the ciliary body and the chorioid
 3. Tunica internal is retina
 4. Refraction media: showing the lens and the vitreous body
- 6 times enlarged. On stand.



Packing: 18pcs/carton, 53x39x55cm, 22kgs



◀ TM-316A Giant Eye Model

This model is upgraded from TM-316, change the eyeball to white color.

Packing: 18pcs/carton, 53x39x55cm, 22kgs

➤ TM-316B Eye with Orbit

The model shows the eyeball with optic nerves and muscles in its natural position in the bony orbit. Dissectible into 10 parts, 3 times enlarged.

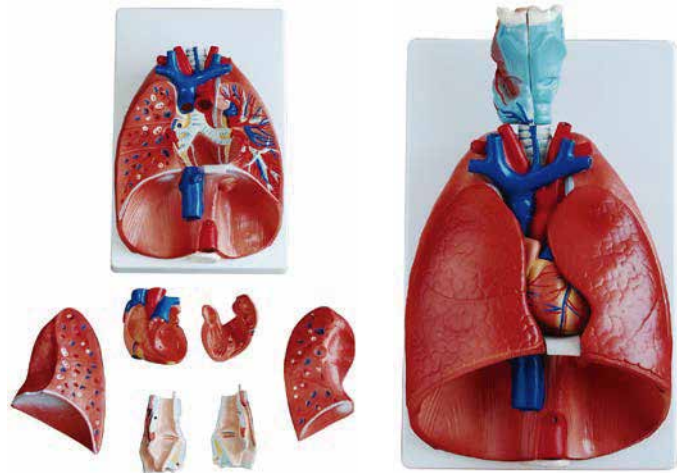
Packing: 8pcs/carton, 53x40x47cm, 10kgs



► TM-320 Larynx, Heart and Lung Model

This life-size model is separated into 7 parts. The lungs have two removable lobes to show the internal structures, the heart bisects showing atria, ventricles and valves, the larynx bisects and the diaphragm is shown. On stand. Size: 36x23x12CM.

Packing: 6pcs/carton, 47x44.5x38.5cm, 14kgs



◀ TM-321 Lung Model

A life-size model separating into 4 parts. The lungs have two removable lobes to show the internal structures. On stand.

Packing : 8pcs/carton, 57x46x62cm, 14kgs

► TM-330 Model of the Transparent Lung Segment

This model presents 10 segments in the right lung and 8 in the left. The distributions of the bronchial tree can be observed through the transparent lungs. The lung made of transparent plastic. The trachea and bronchial tree is made of PVC. 2 times enlarged.

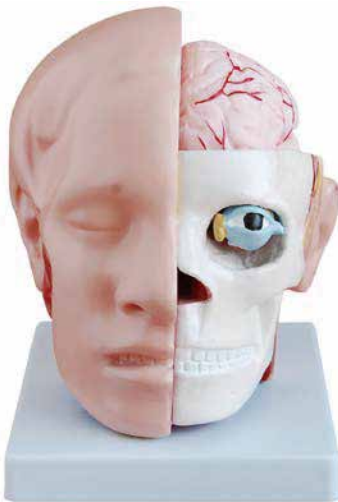
Packing: 4pcs/carton, 83x36x39cm, 6kgs



➤ TM-318 Brain with Arteries on Head

This model shows the brain structure inside the skull. Two halves brains can be disassembled into: frontal with parietal lobes, temporal with occipital lobes, half of brain stem, half of cerebellum. Dissectible into 9 parts, life-size.

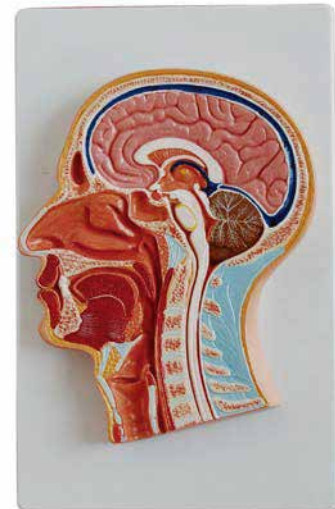
Packing: 8pcs/carton, 53x40x47cm, 14kgs



◀ TM-318B Head with Brain

This model shows the head structure including brain structure inside the skull. Dissectible into 10 parts, life-size.

Packing: 8pcs/carton, 53x40x47cm, 14kgs



➤ TM-319 Median Section of the Head

This model shows all relevant structures of the human head in great detail.

Packing: 5pcs/carton, 38.5x35x25cm, 5kgs



◀ TM-324 Model of the Head

This model shows the interior parts of the mouth cavity and pharynx with network of vessels and trigeminal nerves.

Packing: 10pcs/carton, 39.5x35x29cm, 7kgs



▲ TM-325 Palm Anatomy

These life size models show the superficial and internal structures of the palm. Dissectible into 4 parts.

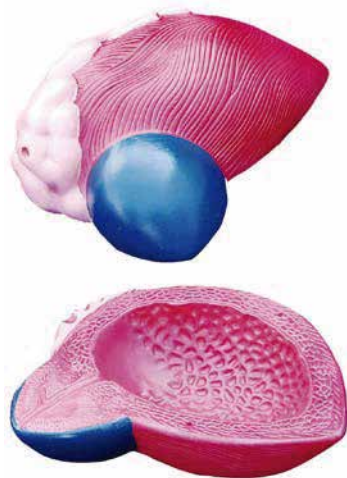
Packing: 10sets/carton, 74x43x29cm, 14kgs



▲ TM-326 Normal, Flat and Arched Foot

These models show the anatomical structure and the distal end of tibia of normal, flat and arched foot.

Packing: 10sets/carton, 74x43x29cm, 4kgs



◀ TM-317 Expansion Model of Urinary Bladder

This model shows the male urinary bladder with the prostate gland surrounding the urethra. Dissected medially to expose both internal and external structures.

Packing: 20pcs/carton, 55x39x47cm, 13kgs



◀ TM-331 Male Urogenital System

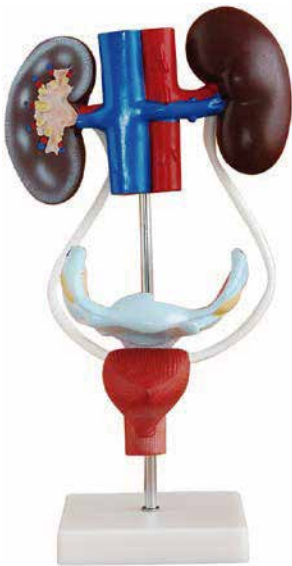
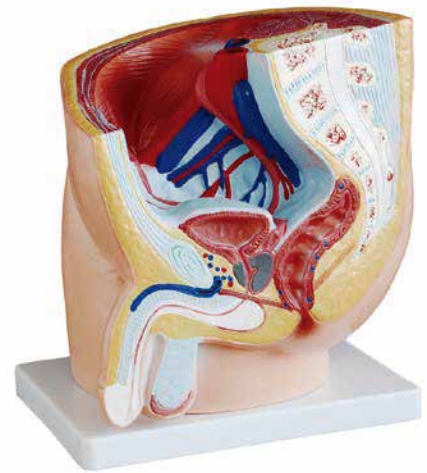
Demonstrate the external features of the urogenital system and the internal structures of the kidney, urinary bladder, penis and testicle. Made of PVC plastic.

Packing: 16pcs/carton, 75x38.5x40cm, 16kgs

▶ TM-331A Human Male Pelvis Section (1 part)

This median section model shows the normal position of male genital organs with bladder and rectum in the male pelvis. Made of PVC.

Packing: 8pcs/carton, 57x46x62cm, 15kgs



◀ TM-332 Female Urogenital System

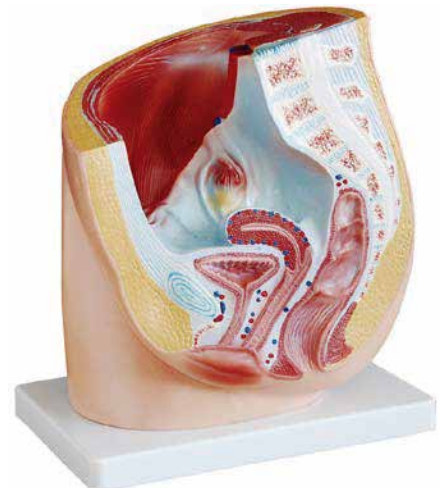
This model shows kidney, ureters, urinary bladder, uterus, accessories of uterus, vagina, ovary membrane, ligaments, uterus ligament and its artery etc. Made of PVC plastic.

Packing: 16pcs/carton, 75x38.5x40cm, 14kgs

▶ TM-332A Human Female Pelvis Section (1 Part)

The median section model shows female genital organs with bladder and rectum. The abdominal and pelvis muscles are detailed shown. Made of PVC plastic.

Packing: 8pcs/carton, 57x46x62cm, 15kgs





◀ TM-331B Human Male Pelvis Section (2 Parts)

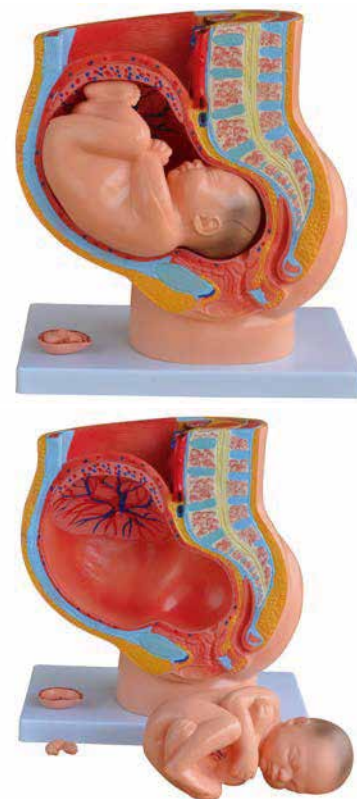
This median section model shows the normal position of male genital organs with bladder and rectum in the male pelvis. Dissectible into 2 parts.

Packing: 4pcs/carton, 37x55x37cm, 10kgs

▶ TM-332B Human Female Pelvis Section (4 parts)

This median section model shows the female pelvis during the 40th week of pregnancy with a removable fetus. Demonstrate normal position of child before birth, female genital organs, human reproductive and urinary systems. A uterus with embryo in 3rd month of pregnancy is mounted on base for study.

Packing: 4pcs/carton, 77x54x42cm, 16kgs



◀ TM-332B-1 Human Female Pelvis Section (2 Parts)

This median section model shows the normal position of female genital organs with bladder and rectum in the female pelvis. The abdominal and pelvis muscles are detailed shown. Made of PVC plastic.

Packing: 2pcs/carton, 40.5x33x40.5cm, 6kgs



TM-331C Advanced Male Internal & External Genital Organs

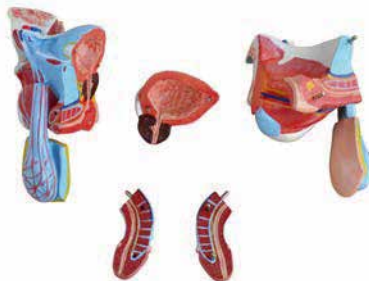
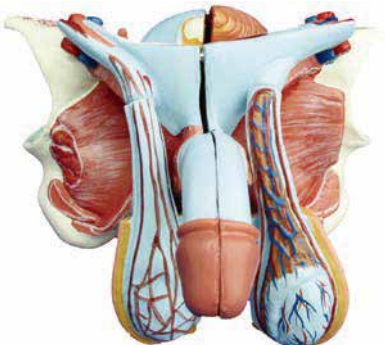
Used to practice the insertion of a lubricated catheter through a collapsible external urethra meatus into the bladder with this realistic model.

Packing: 20pcs/carton, 55x39x47cm, 10kgs

TM-332C Advanced Female Internal & External Genital Organs

This model allows students to locate the urethra and pass a lubricated catheter through it into the bladder.

Packing: 20pcs/carton, 50x35x42cm, 10kgs



TM-331D Male Genital Organ Model

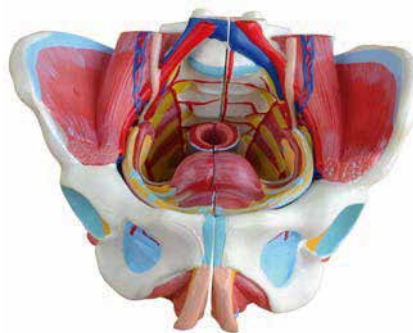
This anatomical model shows the interior and exterior structure of male genital organ. Dissected into 5 parts. Life size.

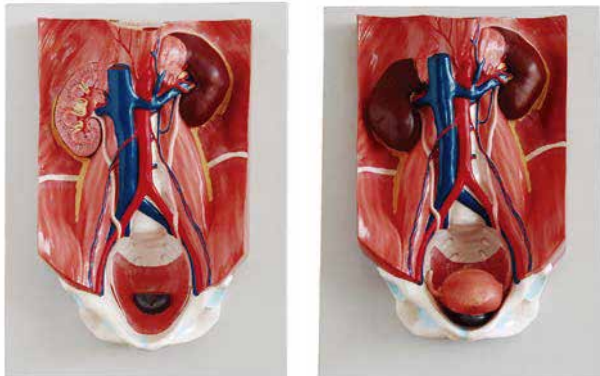
Packing: 20pcs/carton, 53x39x47cm, 16kgs

TM-332D Female Pelvis Model

This model is and painted in life-like color. It shows all the interior and exterior female organs, blood vessels, ligaments, nerves, muscle structures within the framework of the bony pelvis. Life size.

Packing: 10pcs/carton, 74x43x29cm, 11kgs

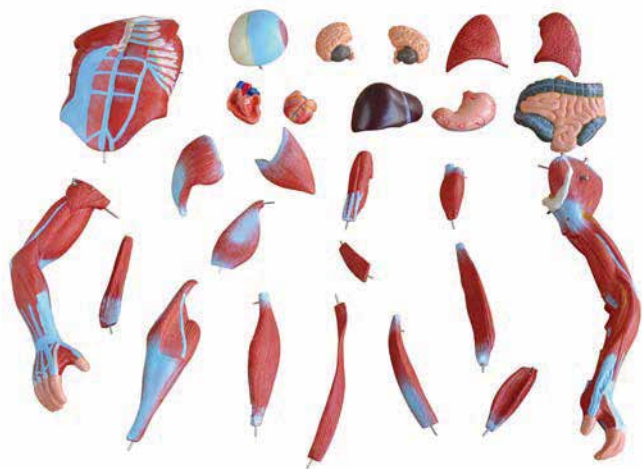




◀ TM-333 Urinary System Model

The model shows the structures of retroperitoneal cavity, pelvis with bones and muscles, inferior vena cava, aorta with its branches, upper urinary tract, kidney with adrenal gland, ureter, bladder, etc. Dissectible into 4 parts.

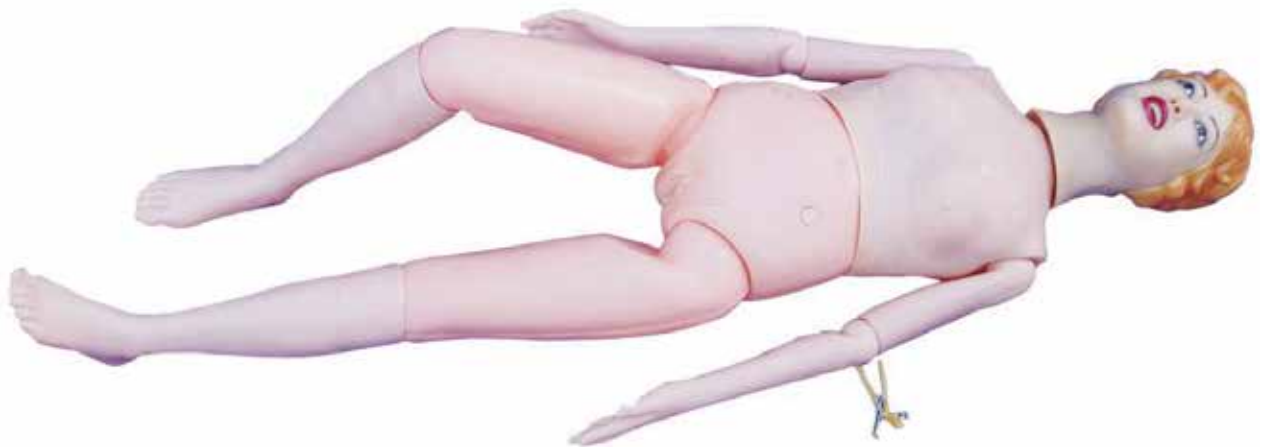
Packing: 5pcs/carton, 74x43x29cm, 11kgs



⬆ TM-334 80CM Human Muscle Model Male (27 Parts)

This human muscle model including 27 dissectible parts: body, cut calvarium, brain (2 parts), thoracic and abdominal wall, right arm, left arm (5 parts), leg (9 parts), lung (2 parts), heart (2 parts), liver, stomach and intestine. Size: 80CM.

Packing: 1pcs/carton, 90x39x26cm, 8kgs



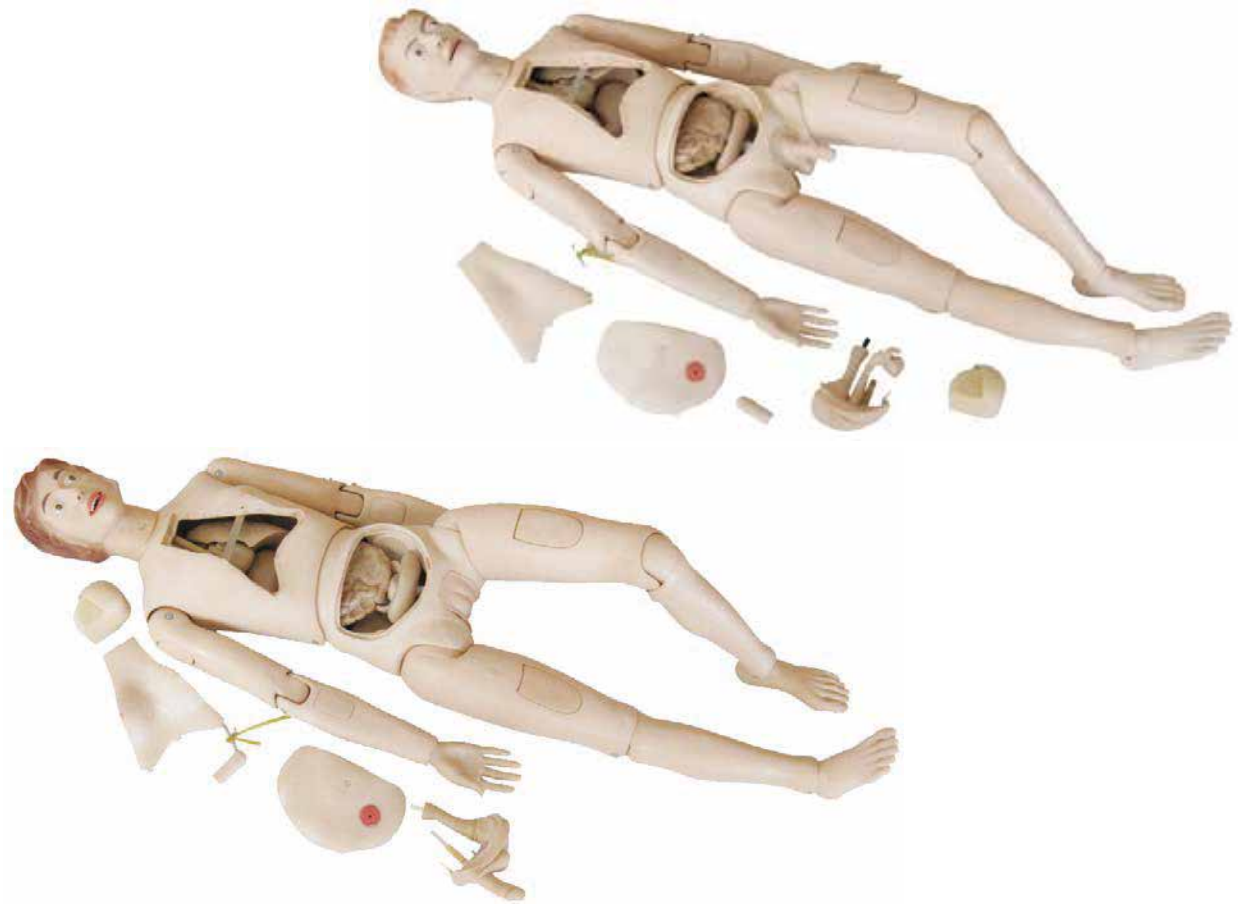
▲ TM-401 Multifunctional Patient Care Manikin

This model is suitable for the health and nursing schools and medical schools at all levels for use in nursing teaching. All the joints can move activity, the waist can bend, all parts are detachable. The model is made of Semi-Hard plastic, material is durable, using conveniently, can execute a variety of training nursing and simple operation.

Feature:

- 1) Face washing, body washing in bed
- 2) Oral cavity nursing, artificial teeth care
- 3) Simple tracheostomy nursing
- 4) Oxygen inhalation method (stuffy nose, nasal catheter)
- 5) Nasal feeding
- 6) Simple gastric lavage
- 7) Simple CPR press
- 8) A variety of simple puncture simulation: Pleural biopsy, the liver biopsy, kidney puncture, abdominal puncture, bone marrow puncture and lumbar puncture
- 9) Deltoid muscle injection, subcutaneous injection
- 10) IV injection
- 12) Venous transfusion
- 13) Intragluteal injection
- 14) Female Catheterization

Packing: 1 pcs/carton, 92x45x32cm, 10kgs



- ⚠ TM-401A High Quality Nurse Training Doll (Male)
- ⚠ TM-401B High Quality Nurse Training Doll (Female)

This model is developed for nurse training, is widely used in first aid and emergency rescue as well as the regular nurse training. This model is made according to the normal position and activities of the human body as much as possible. Each model is equipped with male and female genitalia, can exchange to use. Model of the arms, thigh and buttock have injection pads available training. This model is equipped with internal organs, not only for basic nursing, medical care available to use also. Made of PVC.

Feature:

- 1) Head nursing: face washing, eye drops, ear drops, oral care
- 2) Holistic Nursing: sponge bath in bed, sitting sponge bath, wear clothes, cold or heat therapy
- 3) Oxygen inhaling
- 4) Nasal feeding
- 5) Gastric lavage
- 6) Tracheostomy care
- 7) Study chest anatomical structure of vital organs
- 8) Arm intravenous injection, transfusion training
- 9) Injection Next Deltoid
- 10) Intramuscular injection
- 11) Male and female catheterization
- 12) Enema
- 13) Percutaneous transrenal stomy
- 14) Study abdominal cavity anatomical structure of vital organs

Packing: 1 pcs/carton, 99x42x54cm, 18kgs



- ⚠️ TM-401A-1 New Style High Quality Nurse Training Doll (Male)
- ⚠️ TM-401B-1 New Style High Quality Nurse Training Doll (Female)

This manikin is upgraded from TM-401A/B.

Feature:

- 1) Head nursing: face washing, eye drops, ear drops, oral care
- 2) Holistic Nursing: sponge bath in bed, sitting sponge bath, wear clothes, cold or heat therapy
- 3) Oxygen inhaling
- 4) Nasal feeding
- 5) Gastric lavage
- 6) Tracheostomy care
- 7) Study chest anatomical structure of vital organs
- 8) Arm intravenous injection, transfusion training
- 9) Injection Next Deltoid
- 10) Intramuscular injection
- 11) Male and female catheterization
- 12) Enema
- 13) Percutaneous transrenal stomy
- 14) Study abdominal cavity anatomical structure of vital organs
- 15) Blood transfusions, draw blood

Packing: 1pcs/carton, 99x42x54cm, 18kgs



▲ TM-401A-2/TM-401B-2 Advanced Nurse Training Doll with Blood Pressure Training Arm (Male/Female)

This manikin is upgraded from TM-401A-1/401B-1.

Feature:

- 1) Head nursing: face washing, eye drops, ear drops, oral care
- 2) Holistic Nursing: sponge bath in bed, sitting sponge bath, wear clothes, cold or heat therapy
- 3) Oxygen inhaling
- 4) Nasal feeding
- 5) Gastric lavage
- 6) Tracheostomy care
- 7) Study chest anatomical structure of vital organs
- 8) Arm intravenous injection, transfusion training
- 9) Injection Next Deltoid
- 10) Intramuscular injection
- 11) Male and female catheterization
- 12) Enema
- 13) Percutaneous transrenal stomy
- 14) Study abdominal cavity anatomical structure of vital organs
- 15) Blood transfusions, draw blood
- 16) Blood pressure training arm, with Blood pressure meter and stethoscope

Packing: 1 pcs/carton, 99x42x54cm, 19kgs



▲ TM-401C Advanced Multifunctional Nursing Training Doll

This newly developed advanced multifunctional nursing training doll, features: Standard size, life like, exchangeable male and female genital insert with movable joints, simulate joint stiffness, trunk forward flexion, can sit on wheelchair bathing the bed-ridden patient.

Feature:

- 1) Practice lifting, carrying & moving patient
- 2) Eye care
- 3) Tracheostomy care
- 4) Oral care
- 5) Oxygen inhalation, inhalation therapy
- 6) Nasal feeding
- 7) Gastric (stomach) lavage
- 8) Breast care
- 9) Intramuscular injection
- 10) Ostomy care
- 11) Catheterizations
- 12) Enemas
- 13) Bandages

Packing: 1pcs/carton, 99x42x54cm, 20kgs

▶ TM-457 Blood Pressure Training Arm

The model is suitable for teaching and exercising blood pressure skills. Systolic blood pressure, diastolic blood pressure and pulse rate values can be adjusted. Blood pressure setting is accurate to 1mm Hg.

Packing: 1pcs/carton, 78x22x15cm, 5kgs





⚠️ TM-401D Advanced Trauma Simulator

Advanced trauma simulator is a full-body, lifelike PVC manikin that realistically simulates a trauma patient. It is specifically designed for training professionals in the field of emergency care and transportation of the sick and injured. The advanced trauma simulator consists of 22 modules. It can be attached to various parts of the trauma on the care model to simulate a variety of physical trauma, including facial burns 1.2.3 degrees, lacerations, contusions, small intestine protruding, open fractures, gunshot wounds, stab wounds and a metallic foreign body limb fracture and other injuries.

Feature:

A. Washing, disinfection, hemostasia, enswathement, etc

B. Open fracture, truncation trauma

C. TRAUMA MODULE:

1) Facial Burn, degree I, II, III.

2) Laceration of forehead.

3) Jaw wound.

4) Open clavicle fracture and contusion wound on the chest.

5) Abdominal wound with protruding intestines.

6) Chest wall section and suture incision.

7) Abdomen wall section and suture incision.

8) Open humerus fracture of the arm.

9) Open fracture of the hand (including parenchyma laceration, fracture and bone tissue exposure).

10) Gunshot wound of the palm.

11) Burn in the forearm, degree I, II, III.

12) Open femur fracture of the leg.

13) Open tibia fracture of the leg.

14) Leg amputation.

15) Metal pricking wound of the thigh.

16) Tear of the thigh skin.

17) Sepsis wound of the thigh.

18) Infective ulcer of the thigh.

19) Thigh section and suture incision.

20) Foot necrosis.

21) Amputation stump of arm.

22) Amputation stump of leg.

Packing: 1pcs/carton, 99x42x54cm, 24kgs



▲ TM-401D-1 Advanced Trauma Accessories

1. The model consists of 19 modules, which simulate most kinds of wounds of body, including burn, laceration, contusion, opened fracture, gun wound and etc
2. This model is vivid and all parts have good touch
3. It is suitable for first-aid training of surgical trauma, and can be used to simulate bleeding, hemostasis, washing, disinfection, enswathing of the wound

TRAUMA MODULE:

- 1) Facial Burn, degree I, II, III.
- 2) Laceration of forehead.
- 3) Jaw wound.
- 4) Open clavicle fracture and contusion wound on the chest.
- 5) Abdominal wound with protruding intestines.
- 6) Open humerus fracture of the arm.
- 7) Open fracture of the hand (including parenchyma laceration, fracture and bone tissue exposure).
- 8) Gunshot wound of the palm.
- 9) Burn in the forearm, degree I, II, III.
- 10) Open femur fracture of the leg.
- 11) Open tibia fracture of the leg.
- 12) Leg amputation.
- 13) Metal pricking wound of the thigh.
- 14) Tear of the thigh skin.
- 15) Sepsis wound of the thigh.
- 16) Infective ulcer of the thigh.
- 17) Foot necrosis.
- 18) Amputation stump of arm.
- 19) Amputation stump of leg.

Packing: 1sets/carton, 54x28x21cm, 5kgs



⬆ TM-425 3-Year-Old Child Nursing Training Doll

This 3-year-old child nursing training doll with 85 cm length and flexible joint.

Feature:

- 1) Daily child care: Dressing, living, bathing & etc
- 2) Eye, Oral, Nose care
- 3) Nursing of foreign body airway obstruction
- 4) Bladder irrigation
- 5) Gastric (stomach) lavage
- 6) Catheterizations
- 7) Nasal feeding
- 8) Intramuscular injection: Arm and Thigh have intramuscular injection pad
- 9) Wound Care - Suture
- 10) Ostomy care
- 11) Bladder puncture
- 12) Replaced abdominal wall: Boy has a Hernia repair scar, Girl has an Appendectomy scar

Packing: 1pcs/carton, 79x48x27cm, 13kgs

➤ TM-404 Basic CPR Training Model (Half Body)

The model is designed according to human anatomical half body, served as a teaching aid for education, hygiene, first aid training and demonstration. It shows the half body from the head to the sixth rib of the chest. The cross-section is color painted to show different organs clearly and vivid. The full shape of the heart and lung showing the various movements when demonstrating heart pressure and mouth to mouth respiration.

Feature:

CPR manikin features:

- 1) Head can be raised up and down, neck joint is movable
- 2) Eyelid can open and close
- 3) Nose wing is soft, easy to tweak. The mouth can open and close. Can do mouth to mouth respiration or mouth to nose respiration
- 4) Consist of spring and heart model in heart part
- 5) Skin is springy with natural skin color

CPR instrument feature:

- 1) Green light bright, heart pressure correct
- 2) Red light bright, heart pressure too strong
- 3) No light bright, pressure on a wrong place or pressure is too light

Packing: 1pcs/carton, 63x25x44cm, 8kgs



➤ TM-404A/404B Electronic Half-body CPR Training Manikin (Male/Female)

This Adult CPR model simple, economical and portable, it is used at all levels of hospitals, medical schools, an ideal model of CPR training and teaching.

Feature:

- 1) Airway opening simulation
- 2) Handling press on the chest: strength correct (4-5cm), show correct bumping
Pressure too large (over 5cm) , show alert bumping
- 3) Mouth to mouth (blowing): the tidal volume range judged by observing the ups and downs of the chest (tidal volume standard $\leq 500\text{ml}/600\text{m}-1000\text{ml}$)
- 4) Operating frequency: the latest international standard: 100 times/min.

Packing: 1pcs/carton, 78x36x25cm, 7kgs

- ✓ TM-406-1 / 406A-1 Whole Body Basic CPR Manikin Style 100 (Male / Female)
- ✓ TM-406-2 / 406A-2 Whole Body Basic CPR Manikin Style 200 (Male / Female)
- ✓ TM-406-5 / 406A-5 Whole Body Basic CPR Manikin Style 500 (Male / Female)



TM-406-1

TM-406-2

TM-406-5

Implement standard: AHA (American Heart Association) guideline for CPR

Feature:

CPR manikin feature:

- 1) Clearly anatomic characteristic, realistic touch feeling and lifelike skin color, vivid appearance
- 2) Simulate vital signs
 - (a) Pupil state: contrast observation of pupils, one is dilated, the other one is contracted
 - (b) Carotid artery response: simulate carotid artery pulse
- 3) Open airway
- 4) Can perform artificial breathing and external cardiac compression

CPR instrument feature:

- 1) Available CPR training
- 2) Electronic monitoring of compression site
- 3) Indicators show inflation volume, correct inflation volume: 800-1200ml
 - (a) Insufficient inflation volume, yellow indicator
 - (b) Proper inflation volume, green indicator
 - (c) Excessive inflation volume, red indicator
- 4) Indicators show compression depth: correct compression depth: 4-5cm
 - (a) Insufficient compression depth, yellow indicator
 - (b) Proper compression depth, green indicator
 - (c) Excessive compression depth, red indicator
- 5) Voice Prompt
- 6) Operation rate: ≥ 100 times/min
- 7) Operation cycle: 2 valid inflation after 30 valid compression, 5 cycles
- 8) Set the operating time, values in seconds
- 9) Result Printing: TM-406-2/TM-406-5

Packing: 1pcs/carton, 94x38x58cm, 21kgs



⬆ TM-BLS Basic Life Support, BLS Manikin (CPR & AED Simulator)

Implement standard: AHA (American Heart Association) guideline for CPR

The system provides BLS (Basic Life Support) teaching, operation process training and assessment. The system consists of basic emergency application software, full-body manikin, simulative AED; it can simulate pupil changes, carotid artery pulse, CPR training, AED defibrillation, case editing and multimedia courseware teaching. It is applicable for CPR training organization, hospitals, Medical colleges and Medical School for BLS training.

Features:

- 1) Simulating of a patient: the changes of pupils and carotid
- 2) Open airway
- 3) CPR: instantaneous graphics displaying of data, statistic report, training evaluation for one or more person, optional sounds related to CPR
- 4) AED Defibrillation: use a AED simulator machine , provide electrode patch
- 5) Script editor: the system provides multiple emergency cases

Optional function

- 1) Human trachea intubation
- 2) ECG simulator

Packing: 1pcs/carton, 94x38x58cm, 22kgs

▶ TM-416 Infant CPR Training Model

CPR manikin feature:

- 1) Clearly anatomic characteristic, realistic touch feeling and lifelike skin color, vivid appearance
- 2) Can perform artificial respiratory, extracardial compression and airway open
- 3) Operation mode: CPR training, can perform compression and inflation

CPR instrument feature:

- 1) Indicator show inflation volume, correct inflation volume: 30ml-50ml; Fast ventilation > 30ml within 0.27 seconds indicated by red light. When the inflation volume is excessive, proper, indicators will accordingly be yellow, green, and alarm will ring accordingly
- 2) Indicator show compression depth: correct compression depth: approximately 13mm-20mm
When the compression depth is proper or excessive, indicators will accordingly be green, yellow, and alarm will ring accordingly
- 3) Indicator show compression position: Right compression position indicated by red light on the middle chest
- 4) Operation frequency: ≥ 100 times/ min
- 5) Ratio of compression and artificial respiratory: 30:2/single or 15:2/double
- 6) Operation cycle: after 2 valid inflation, then 5 cycles CPR operation according to the ratio of compression and inflation 30:2 or 15:2



Packing: 1pcs/carton, 64x32x18cm, 5kgs

✔ TM-426 Child CPR Training Manikin

CPR manikin feature:

- 1) External breast compression and artificial respiratory: indicator light display and sound prompting device
- 2) Operation methods: exercise operation
- 3) Examination of carotid response: pinch the pressure ball by hand and simulate carotid pulse

Packing: 1pcs/carton, 79x48x27cm, 13kgs

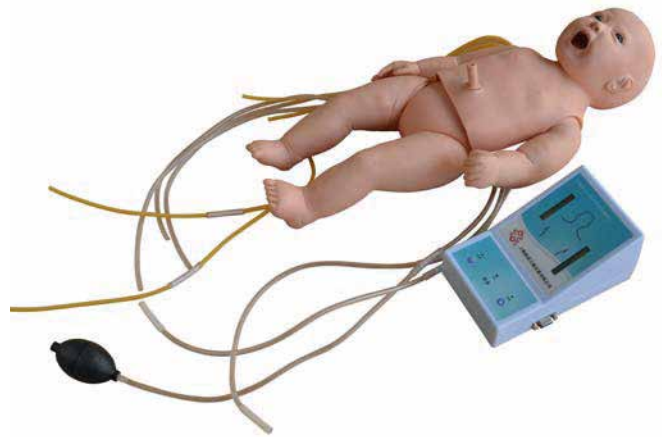


➤ TM-423 Advanced infant CPR and Nursing Manikin

Design according to infant anatomical structure, imported material, flexible joints, soft skin, realistic and vividly Features:

- 1) General care: change diapers, wear clothes, oral care, hot and cold therapy, bandaging.
- 2) Venous transfusion/puncture: arm vein include: brachiocephalic vein and superficial veins. Scalp vein Include: frontal vein, superficial temporal vein and femoral vein.
- 3) Umbilical cord care: ligature umbilical cord, umbilical venous intubation and transfusion.
- 4) Gastric intubation: detect tube position by means of auscultation; can practice gastrointestinal decompression, nasal feeding, gastric lavage, etc.
- 5) Bone marrow puncture: practice tibial puncture; outflow of simulative bone marrow shows proper puncture operation; drug liquid can be injected into and can practice transfusion operation.
- 6) CPR training operation.
- 7) Support mouth to mouth, mouth to nose, simple respirator to mouth, electronically monitor compression; frequency and volume of blowing, compression times, frequency and depth, blowing and compression can be training separately.

Packing: 1pcs/carton, 64x20x34cm, 8kgs



◀ TM-422 Infant Obstruction Model

This model is specially designed for professional training of Heimlich Maneuver, foreign body airway obstruction and breath choke. It provides a realistic condition for releasing of a foreign body obstruction through back blows and chest-thrust techniques during first-aid.

Packing: 1pcs/carton, 54x28x21cm, 4kgs

➤ TM-422A Child Choke Model

This child model ribs, sternum and xiphoid process can be touched, easy for operation and location. Include foreign objects in different shapes, sizes and materials, can simulate foreign objects airway obstruction in various degrees. It is specially designed for Heimlich Maneuver, back blows and chest thrusts.

Packing: 1pcs/carton, 43x25x25cm, 5kgs



➤ TM-407 Human Trachea Intubation Model

This model is designed as a teaching model for training the medical students, basic clinic nurses and first aid people to demonstrate and practice trachea intubation through mouth.

- 1) Trachea intubation through mouth.
- 2) Compare pupils: one is normal, another is large.

Packing: 1pcs/carton, 58x37x29cm, 7kgs

➤ TM-407A Advanced Human Trachea Intubation Model

Features:

- 1) Upgraded from TM-407
- 2) Neck backward function, more realistic simulation of endotracheal intubation technique and teaching demonstration and practice operation.

Packing: 1pcs/carton, 58x37x29cm, 7kgs



◀ TM-410 The Model of Newborn Intubation

This model is used to demonstrate the newborn baby intubation and train the students to learn intubation skills. Served as an ideal model for medical colleges, nursing schools and hospitals etc.

Packing: 12pcs/carton, 59x54x34cm, 10kgs

➤ TM-410A Infant Intubation Training Model

Realistic anatomical structure of infant mouth, pharynx, trachea. Tracheal intubation, directly observe the expansion of lungs and stomach by insufflating air into the tube and stomach so as to verify if the tube position is right.

Packing: 1pcs/carton, 38x20x28cm, 3kgs



➤ TM-454 Tracheostomy Simulator

- 1) Trachea anatomy is standard; trachea is touchable.
- 2) Simulate dorsal position and neck extending
- 3) Percutaneous tracheostomy, including various incisions: longitudinal incision, transverse incision, crisscross incision, U shape and inverted-U shape incision
- 4) Cricothyrotomy endotracheal intubation

Packing: 1pcs/carton, 43x25x35cm, 5kgs



➤ TM-454A Advanced Adult Tracheotomy Care Model

- 1) Precise Anatomy: pharynx, epiglottis, trachea, esophagus, position of tracheotomy, cricoid and left, right bronchial trees
- 2) Tracheotomy Care
- 3) Sputum Suction
- 4) Clean and Care of Tracheal Cannula

Packing: 1pcs/carton, 51x28x51 cm, 10kgs

Simulator Series

➤ TM-458 Suction Training Model

- 1) Suction tube can be inserted into nasal cavity and oral cavity, and simulated sputum can be suctioned.
- 2) Suction tube can be inserted into trachea and bronchia through nasal cavity or oral cavity. And trainers can observe the interior operation and simulate intubation and suction.
- 3) Suction tube can be inserted into trachea and bronchia through tracheotomy cannula. And trainers can observe the interior operation and simulate intubation and suction.
- 4) By taking off one half of the face, the intubating position can be confirmed, and the anatomical structures of nasal cavity, pharynx, oral cavity and cervix can be learned. The trainers can exercise suction skill under straight observation, and improve the effectiveness of the training.

Packing: 1pcs/carton, 43x25x35cm, 5kgs





◀ TM-403 Dental Care Model (28 teeth)

These models are to serve for demonstration in mouth protection and relative clinical teaching. Consists of gum, teeth, tongue and palate. It demonstrates teeth form and oral cavity cleaning and protection. With tooth brush.

TM-403 28 teeth 19x16x11cm

Packing: 20pcs/carton, 53x39x47cm, 15kgs

TM-403A 32teeth 24x16.2x13.7cm

Packing: 20pcs/carton, 64x53x38cm, 22kgs

◀ TM-403A Dental Care Model (32 teeth)

▶ TM-403B Small Dental Care Model (28 teeth) ▶ TM-403C Small Dental Care Model (32 teeth)

These models are to servc for demonstration in mouth protection and relative clinical teaching. Consists of gum, teeth, tongue and palate. It demonstrates teeth form and oral cavity cleaning and protection. With tooth brush.

TM-403B 28 teeth 11x16.5x11cm

Packing: 30pcs/carton, 55x39x47cm, 13kgs

TM-403C 32 teeth 11.3x17x10cm

Packing: 30pcs/carton, 55x39x47cm, 13kgs



◀ TM-403D Dental Care Model (with Cheek)

Model is making from the life size dental. Anatomical structure including: cheek, palatal, teeth(crown), gums, upper and lower dental arch, tongue. It demonstrates teeth form and oral cavity cleaning and protection.

Packing: 32pcs/carton, 62x29x29cm, 15kgs



TM-405 Nurse Basic Practice Teaching Model

The basic practice teaching model is designed according to human anatomy and suitable for nursing schools and hospitals for demonstration and practice. It has 5 parts and can demonstrate 15 operations.

Part 1: Upper and front part of male body

Part 2: Left: hand

Part 3: Male lower abdomen and perineum

Part 4: Buttock

Part 5: Female perineum

Packing: 1set/carton, 71x37x46cm, 11kgs

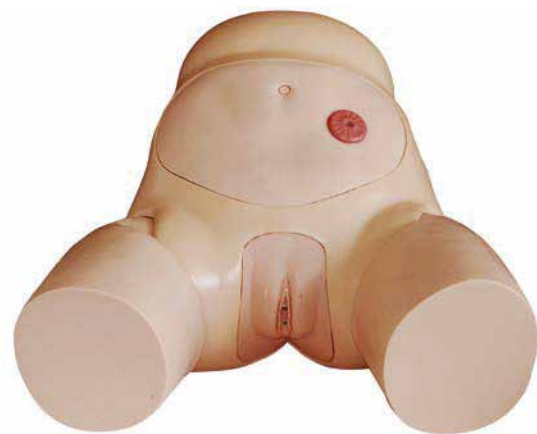
TM-408 Electronic Urinary Model

This model can be demonstrated some functions: catheterization of male, catheterization of female and intestinal irrigation etc.

Packing: 1pcs/carton, 58x37x29cm, 7kgs



TM-408C Advanced Male Urethral Catheterization Simulator



TM-408D Advanced Female Urethral Catheterization Simulator

This model can be practiced just as on a real patient. A lubricated catheter can be inserted in the urethral orifice, passed through the urethra, and into the bladder. When the bladder is successfully entered, artificial urine (water) will flow from the catheter.

Packing: 1pcs/carton, 57x21x50cm, 9kgs



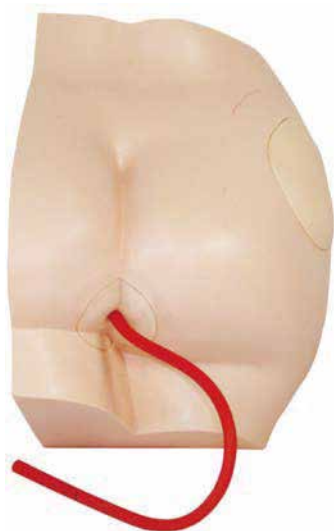
⚠ TM-408E Transparent Male Urethral Catheterization Simulator

This simulator based on the normal human anatomy. Students can practice catheterization while observing what is happening internally, also view the indwelling condition of a balloon catheter, flow of urine, and the relative position of the pelvis and bladder through a transparent hypogastrium.

Packing: 1pcs/carton, 57x21x50cm, 8kgs



⚠ TM-408F Transparent Female Urethral Catheterization Simulator



⚠ TM-431 Buttock Injection Model

This model shows the location for muscle injection on the buttock, supply for training the students to learn injection skills.

Packing: 10pcs/carton, 82x44x33cm, 12kgs

➤ TM-431A Electronic Buttocks Injection Simulator

This model based on the normal human anatomy. For students to wear, surface is very similar to a real body. Simulated injection liquid can be injected into it when inject on the correct area. Alarm system included.

Packing: 1pcs/carton, 44x17x35cm, 4kgs



➤ TM-453 Advanced Intramuscular Injection Training Model

- 1) Structure of left gluteal: osteal marks, gluteal muscles, ischiadic nerve and veins
- 2) Left gluteal can be taken off. So it is easy to observe internal structure and make sure position of ischiadic nerve and veins.
- 3) Gluteal intramuscular injection training.

Packing: 1pcs/carton, 58x37x29cm, 7kgs



◀ TM-453A Intramuscular Injection Model

This model with realistic skin is perfect for teaching proper injection techniques and how to avoid nerves and veins. The see-through right side of the model shows internal structure including bones, muscles, nerves, and veins. The gluteus medius, nerves, veins, ilium crista, and greater trochanter can be palpated to confirm the correct injection points. Fluid injected in the proper place is discharged through a drain tube into drain bag. A green light indicates correct injection technique and positioning - a buzzer and flashing red light warn students if they have gone too deep or if needle position is incorrect.

Packing: 1pcs/carton, 43x28x44cm, 11kgs



➤ TM-441 IV Training Hand

This model includes mainly vein used for IV injection, blood transfusion and other puncture practices. Revehent blood will appear when the injection way is correct.

Packing: 4pcs/carton, 45.5x37x26.5cm, 8kgs



◀ TM-441A Electronic IV Training Hand

This model includes mainly vein used for IV injection, blood transfusion and other puncture practices. Alarm system included.

Packing: 4pcs/carton, 45.5x37x26.5cm, 9kgs



➤ TM-434 Injectable Training Arm Model (With Set) ✓ TM-434A Injectable Training Arm Model (Without Set)

This arm model can demonstrate the following items:

- 1) Vein phlebotomy on elbow forearm
- 2) Vein injection on elbow forearm
- 3) Vein blood transfusion on elbow forearm
- 4) Vein liquid transfusion on elbow forearm
- 5) Muscular injection on deltoid on the side of upper limb

TM-434 Packing: 2pcs/carton, 75x20x29cm, 8kgs

TM-434A Packing: 6pcs/carton, 66x24x30cm, 7kgs



➤ TM-445 Multi-Functional Intramuscular Injection Training Pad

The model consists of skin, subcutaneous tissue and muscle layer. Can be used for intradermic injection, hypodermic injection and intramuscular injection. A wearable design makes it convenient for training. Injection liquid can be injected into it, squeeze the pad after use.



Packing: 32pcs/carton, 62x29x29cm, 14kgs



◀ TM-445A Intramuscular Injection Pad

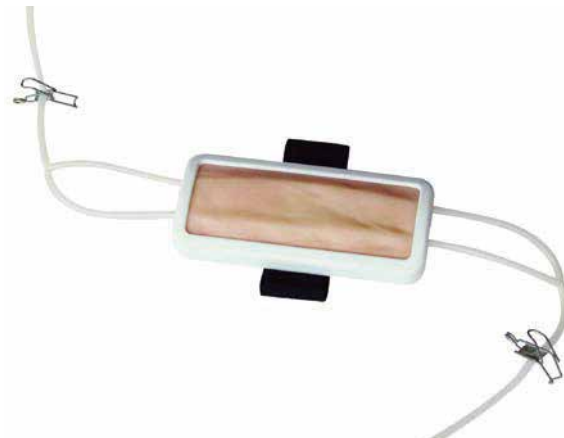
The portable model can be used for injection practice. Skin can be easily replaced.

Packing: 32pcs/carton, 62x29x29cm, 13kgs

➤ TM-442 IV Injection Pad

This portable model can be used for injection, blood transfusion and hemospasia training. The skin and blood vessels can be easily replaced.

Packing: 30pcs/carton, 55x39x47cm, 15kgs



✓ TM-446 Multi-Functional IV Training Arm

This lifelike adult arm reproduction with multi-vein system is designed for peripheral intravenous therapy. Rotation at deltoid for easier access during peripheral IV line insertion and removal. Revehent blood will appear when the injection way is correct. The skin and blood vessels can be easily replaced, and can be used repeatedly.

Packing: 1pcs/carton, 77x16x18cm, 3kgs

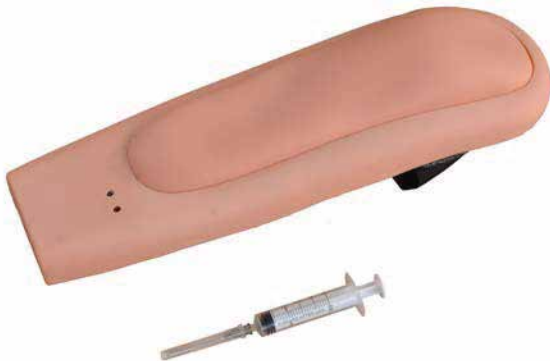


➤ TM-446C Advanced Multi-Functional IV Training Arm with Electric Blood Circle System

This simulator is upgraded from TM-446

- 1) The instrument can simulate blood circulation
- 2) Lifelike arm reproduction with multi-vein system (8 vein)

Packing: 1pcs/carton, 78x22x15cm, 5kgs



◀ TM-441B Wearable Intramuscular Injection Upper-Arm Simulator

Feature:

- 1) The simulator is wearable
- 2) Red light and sound will alarm if injection is too deep or the position is wrong
- 3) Simulated liquid could be used
- 4) Realistic skin, elaborate design

Packing: 1pcs/carton, 46x37x27cm, 8kgs

➤ TM-450 Intradermal Injection Simulator

This intradermal injection model provides realistic feel and appearance to ensure a realistic training experience. The arm features eight sites for practicing intracutaneous injections. If fluid is properly injected, a characteristic skin welt will form.

Packing: 4pcs/carton, 45x37x27cm, 6kgs





◀ TM-456 Ostomy Nursing Model

The model is designed to help introduce the essentials of ostomy care.

- 1) The anatomy of latero-abdominal median incision, colostomy and ileostomy are carefully reproduced to provide lifelike functions and appearance. The model can be operated in erect position or side-lying position.
- 2) Intubation feeding can be actually operated in the ileostomy.
- 3) Ostomy care can be operated in the colostomy, including excretion of synthetic stool, irrigation and stool bag care.

Packing: 1pcs/carton, 43x28x44cm, 9kgs

▶ TM-459 Decubitus Ulcer Care Model

It is molded from an old patient, looks and feels realistic, it can help people learn more about decubitus ulcer training, decubitus ulcer staging, decubitus ulcer stages, and decubitus ulcer simulations. This care model shows 4 stages of ulceration formed by pressure ulcer.

Shows eschar, subcutaneous fat, undermining, tunneling, slough, eschar and exposed bone (with osteomyelitis).

It could be used for incision washing, evaluation and measurement, also the measurement of wound length, depth, undermining and tunneling.



Packing: 1pcs/carton, 43x25x35cm, 6kgs

▶ TM-460 Enema Administration Simulator

The model can be used for standard operation of enema, can reveal standard enema position.

Packing: 1pcs/carton, 43x28x44cm, 8kgs



◀ TM-455 Assessment Guidance Model for Hemostatic of Surface Blutpunkte

This model can simulate areas of petechiae, and also can be used for practicing operating hemostasis while several vascular hemorrhaging

Packing: 1pcs/carton, 38x20x28cm, 3kgs



⚠️ TM-439 Advanced Suture Practice Arm

These two products provide a realistic suturing demonstration. Soft and pliable for easy sewing. These products are provided with "wounds" which can be sutured repeatedly, new "wounds" can be cut also.

TM-439 Packing: 4pcs/carton, 64x33x29cm, 8kgs

TM-440 Packing: 2pcs/carton, 74x43x29cm, 10kgs



⚠️ TM-440 Advanced Suture Practice Leg

✓ TM-471 Surgical Suture and Bandaging Model

The simulator provides commonly used surgical incisions, which simulate all kinds of female thoracic and abdominal incisions, tube drains and amputation stump. Students can practice wounds treatments of washing, disinfecting, changing dressing, bandaging and etc.

Packing: 1pcs/carton, 79x48x27cm, 9kgs

Simulator features the following simulated wounds:

1. Thyroidectomy
2. Mid-sternal split - with two chest tube drains
3. Right mastectomy - with simulated drain
4. Right cholecystectomy - with simulated T-tube
5. Laparotomy
6. Appendectomy
7. Left colostomy
8. Right ileostomy
9. Abdominal Hysterectomy (transverse incision)
10. Left nephrectomy (thoraco-abdominal incision)
11. Right nephrectomy (oblique incision)
12. Laminectomy
13. Sacral decubitus ulcer - stage 2
14. Right thigh amputation stump



➤ TM-442A Suture Practice Pad

This portable model can be used for suture practice. Skin can be easily replaced.

Packing: 30pcs/carton, 55x39x47cm, 15kgs



◀ TM-472 Comprehensive Surgical Skills Training Model

The model provides trainings of incision, suturing and ligaturing of skin, blood vessel, intestinal canal and deep tissue.

- 1) Skin modules: surgical incision, suturing, ligaturing, ligature cutting and dermal suture out of skin
- 2) Intestinal canal module: two types of 20mm and 30mm diameter, practice ring clamp, discussion, anastomosis, ligaturing and cutting of intestinal canal
- 3) Blood vessel module: practice ring clamp, cutting and ligaturing of blood vessel
- 4) Deep ligature module: practice deep ligaturing in the narrow space
- 5) Small size, portable, replaceable modules

Packing: 1pcs/carton, 38x20x28cm, 3kgs



➤ TM-473 Knot Tying Trainer

A trainer for teaching all surgical knot tying techniques skills

- 1) One-handed reef knot technique; 2) Instrument tie; 3) Surgeon's knot;
- 4) Slip knot; 5) Tying in a small opening; 6) Tying at depth vertically in a large opening
- 7) Tying at depth, at an angle, in a large opening

Packing: 8pcs/carton, 58x45x50cm, 14kgs

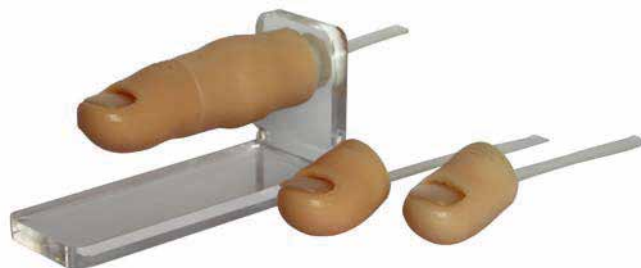


➤ TM-475 Ingrowing Toenail Trainer

Ingrowing Toenail Trainer model closely mimics an inflamed toe end with an ingrowing toenail, is mainly used in removing the ingrowing toenail. Finger shape lifelike, correct anatomy structure, toe end can be replaced. This model is one of the most commonly used materials in clinical surgery and suture training area.

- 1) Ring block techniques
- 2) Application of tourniquet
- 3) Wedge exsion
- 4) Partial nail avulsion
- 5) Total nail avulsion
- 6) Phenolisation techniques
- 7) Ablation of the nail bed

Packing: 20pcs/carton, 63x28x20cm, 6kgs





◀ TM-465 Pneumothorax / Pleural Drainage (Artificial Hydrothorax) Simulator

This manikin is an ideal teaching aid of pneumothorax decompression and closed chest drainage of hydropneumothorax. Features:

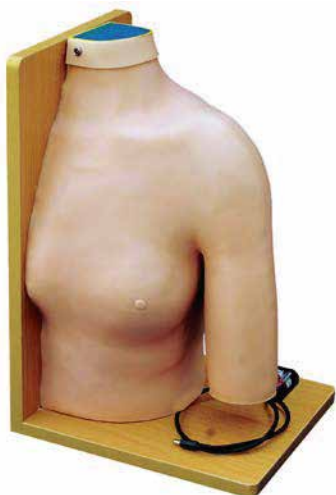
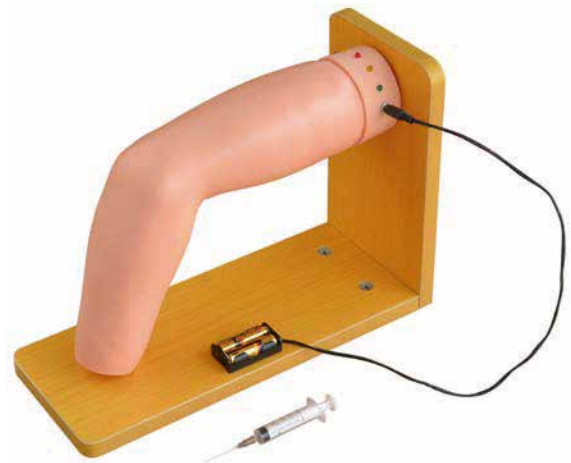
- 1) Pneumothorax decompression, closed chest drainage of hydropneumothorax and drainage tube care after operation can be practiced
- 2) There are two visual windows in right thorax to show each layer of anatomical structures
- 3) Pneumothorax decompression training, closed drainage of hydropneumothorax training and thoracentesis training in the left thorax
- 4) The color, volume and viscosity of the drainage solution can be regulated.

Packing: 1pcs/carton, 56x24x54cm, 12kgs

▶ TM-466 Elbow Joint Intracavitary Injection Simulator

- 1) Adult female arm, setting position is according to Medial epicondyle of Humerus and external epicondyle of humerus, flexible elbow joint
- 2) Standard anatomical structure: internal condyle of humerus, external condyle of humerus, cubital nerve, ulna, radial bone and cavity of elbow joint
- 3) Therapy site of golf elbow and tennis elbow; palpation
- 4) Puncture parts: internal condyle of humerus, external condyle of humerus, alarm after pressure or puncture

Packing: 1pcs/carton, 48x24x30cm, 6kgs



◀ TM-452 Shoulder Joint Intracavitary Injection Model

- 1) Standard anatomical structure, scapula, clavicle, humerus, deltoid, biceps muscle of arm and important ligament of shoulder joint. Train palpation technology of shoulder puncture positioning
- 2) Standard position study for puncture and injection
- 3) Intelligent evaluation system: the green light on the control box will indicate correct puncture site.

Packing: 1pcs/carton, 48x36x32cm, 7kgs



◀ TM-461 Central Venous Puncture Model

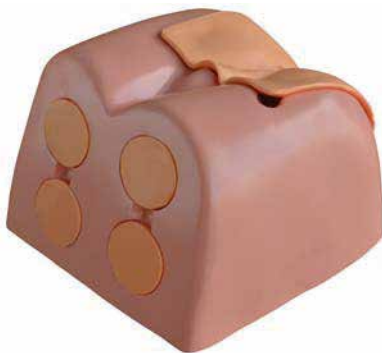
This model is divided into internal carotid artery, carotid artery, subclavian vein and femoral vein and main arteries of femoral artery. Can be used for the injection of internal jugular vein, collarbone vein and femoral vein, blood and other targeted training and the practice of long catheter intubation. This model not only can simulate the pulse of carotid artery, and femoral artery, but also can locate veins.

Packing: 1pcs/carton, 92x51x23cm, 11kgs

▶ TM-463 Lumbar Puncture Model

- 1) In order to observe the shape of vertebral, the place of the L1 and L2 is uncovered.
- 2) L3-L5 spinous process and sacrococcyx are the functional positions for puncturing. Clear marks on these parts facilitate to skills training, including lumbar anesthesia, epidural anesthesia and caudal anesthesia.
- 3) The exercise process can be operated in sitting position or lateral position.

Packing: 1pcs/carton, 43x28x44cm, 11kgs



◀ TM-468 Prostate Examination Simulator

Features:

- 1) Model vividly, feel real, life-like
- 2) Prostate exam position: knee-chest position. digital rectal examination, DRE training
- 3) Five replaceable prostate
 1. normal prostate
 2. bilateral benign prostatic hyperplasia
 3. unilateral benign prostatic hyperplasia
 4. bilateral prostate cancer
 5. unilateral prostate cancer
- 4) Prostate models stored in the box, changed easily

Packing: 1pcs/carton, 43x25x35cm, 6kgs



◀ TM-464 Abdominal Puncture Model

This model is in supine position, obvious anatomical structure can be touched. There is obvious feeling when needle penetrates into the right position, can simulate draw out abdominal effusion.

Packing: 1pcs/carton, 43x28x44cm, 8kgs



◀ TM-402 Model of Course of Delivery

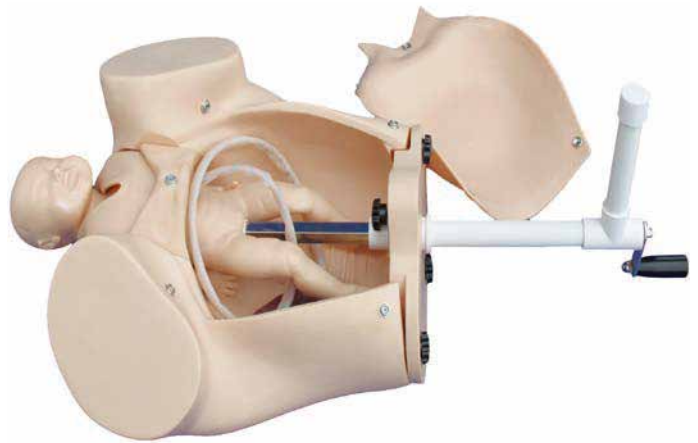
The model is based on the mechanism of normal labor, shows the cardinal movements of engagement: descent-flexion-internal rotation of the head-extension-restitution-external rotation of the head-internal rotation of the shoulders at accouchement. Suitable for teaching the mechanism of normal labor in medical colleges and nursing schools.

Packing: 1pcs/carton, 65x49x44cm, 10kgs

▶ TM-402A Model of Course of Delivery

This is an anatomically correct pelvic model with full term newborn and placenta to give trainees realistic practice in multiple techniques, and to learn the procedure for emergency childbirth.

Packing: 1pcs/carton, 51x28x51cm, 10kgs



◀ TM-419A Midwifery Training Simulator

The pelvic is life size with primary landmark and hand depicted outline. Smooth, soft skull with fontanelles for realistic vacuum delivery. All joint movements allow for different fetus positions to demonstrate a wide variety of normal and abnormal deliveries.

Packing: 1pcs/carton, 58x34x45cm, 9kgs

▶ TM-419B Dystocia Training Simulator

The model can simulate all kinds of abnormal deliveries. Pelvic stenosis can be showed by inflatable air bag and abnormal positioning of fetus demonstrates dystocia.

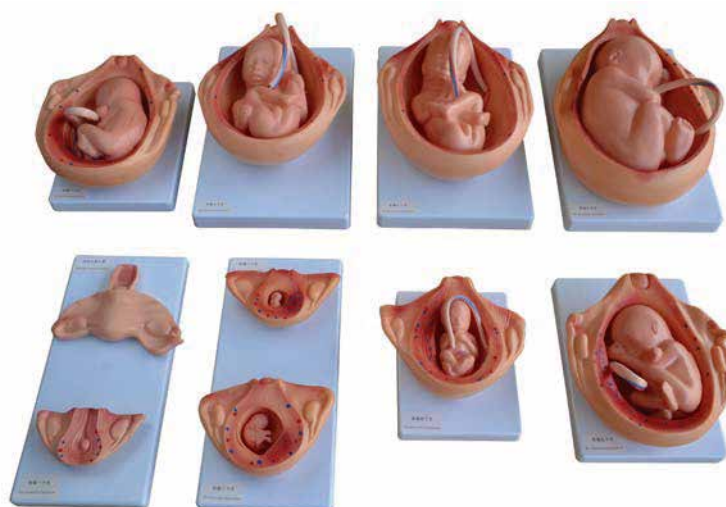
Packing: 1pcs/carton, 58x34x45cm, 10kgs



➤ TM-412 Advanced Maternity Model

This simulator demonstrates palpation, embryo heart sound auscultation, pelvic measurement and mammary nursing training. Uterus can be inflated to lifelike through air filling. The speed of fetal heart sound and volume can be adjusted.

Packing: 1pcs/carton, 68x29x55cm, 15kgs



◀ TM-414 The Development Process for Fetus

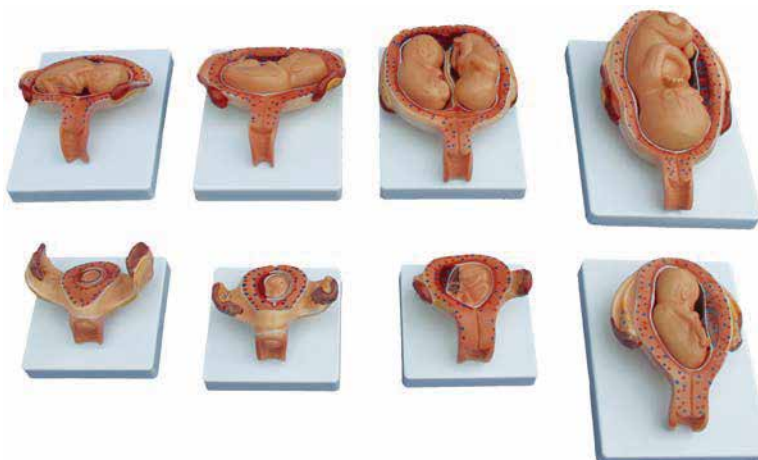
The model consists of 10 parts and show the relationship between fetus and uterus during the gestation period. Dimension: Natural size, on the base.

Packing: 1set/carton, 77x41x33cm, 11kgs

➤ TM-414A The Development Process for Fetus (Half-Size)

This model shows relationship between fetus and uterus in 1st, 2nd, 3rd, 4th, 5th, 6th, 7th month pregnancy, and twins course in the 5th month. Consist of 8 parts.

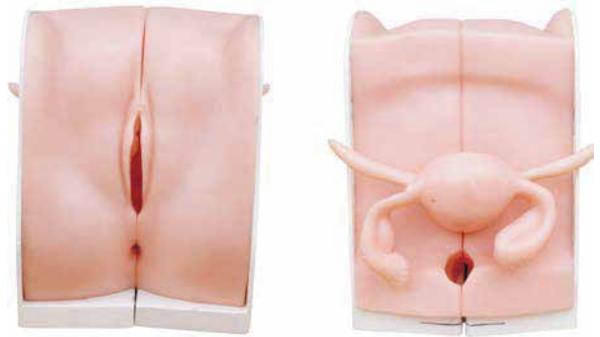
Packing: 1set/carton, 54x28x21cm, 7kgs



TM-417 Contraception Guidance Model

This model shows the anatomical section of female genitals. It can be demonstrated how to put the pessary, how to put contraceptive medicine membrane or tablet, how to put in and take out the IUD and how to make induced abortion etc.

Packing: 10pcs/carton, 74x43x29cm, 12kgs



TM-417A Female Contraception Practice Model

Simulate anteversion uterus, fallopian tubes, labium and vagina. Expansion of vagina, the use of vaginal speculum, operation of female condom, contraceptive sponge and cervical cap. Size: 23x17x14cm.

Packing: 10pcs/carton, 74x43x29cm, 8kgs

TM-418 Breast Examination Model

The model is available for teaching and practicing breast palpation techniques. Designed with a concave back allow placement against the patient for ease in demonstrating or practicing palpation techniques. The breast contains several abnormalities, allows women to practice all phases for breast examination.

Packing: 4pcs/carton, 46x37x27cm, 11kgs



TM-436 Natural Uterus Model

With the coronal section this model shows:

- 1) Uterus
- 2) The cervix is divided into a supra-vaginal portion and a vaginal portion
- 3) The ligaments of the uterus are eight in number
- 4) The fallopian tubes
- 5) The ovaries

TM-436 Packing: 20pcs/carton, 58x28x21cm, 3kgs

TM-436A Packing: 20pcs/carton, 50x35x42cm, 11kgs

TM-436A Magnified Uterus Model



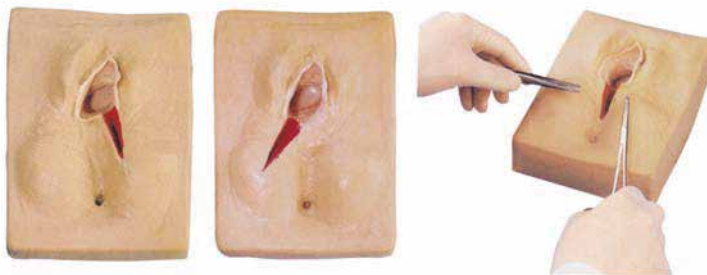


TM-411 Gynecological Training Simulator

The model can be used for:

- 1) Palpation of normal and pregnant uterus
- 2) Bi-manual pelvic and tri-manual pelvic examination
- 3) Vaginal examination
- 4) Visual recognition of normal and abnormal cervixes
- 5) Contraceptive instrument insertion and removal
- 6) Observation of uterus, ovary, fallopian tubes, and ligament teres
- 7) Normal and abnormal uterus and attachment model
- 8) Place and remove IUD by using the guide fork of contraceptive ring
- 9) Gravid uterus (five-mouth fetus)
- 10) Extra-uterine pregnancy (ampullary pregnancy)
- 11) Salpingemphraxis

Packing: 1pcs/carton, 58x34x45cm, 6kgs



TM-447 Vulva Suturing Training Simulator

Right, left or median posterior incision can be selected to exercise perineum cutting and suturing.

Packing: 12sets/carton, 59x54x34cm, 18kgs

TM-447A Perineum Cutting and Suturing Training Simulator

Feature:

- 1) This model is designed for practice of perineum cutting and suturing
- 2) The main structure of the simulator is a perineum, which is made of simulative foam, and the inner muscle is soft PVC. The simulator is mounted on a plastic framework, easy disassembly
- 3) There are handles in the back and bottom of the simulator to adjust tension of the perineum
- 4) Size:36x34x26cm.

Packing: 3pcs/carton, 74x36x35cm, 6kgs



➤ TM-448 Advanced Artificial Abortion Simulated Uterus

- 1) Three pregnant uterus can be opened and add to simulated gestation sac
- 2) Uterine dilator and curet can be inserted into cervix; can simulate curettage operation and the simulated gestation sac can be scraped
- 3) With basement support and can fix the uterus in the right position.

Packing: 4pcs/carton, 46x37x27cm, 7kgs



◀ TM-449 Labor Delivery Module

- 1) Six labor stations selected to represent conditions of the cervix and vagina prior to labor, during labor, and at birth
- 2) Stations illustrated are:
STA -5 prior to onset of labor;
STA -4 cervix partially effaced;
STA -3 cervix fully effaced;
STA 0 fetal head at plane of ischial spine;
STA +2 cervix nearing full dilation;
STA +5 crowning of fetal head.

Packing: 1pcs/carton, 43x25x35cm, 7kgs

Simulator Series

➤ TM-469 Pelvimetry Demonstration Model

Features:

- 1) An adult pelvic model, life size, with accurate anatomical structure
- 2) Show three planes of pelvic cavity:
 1. Pelvic inlet plane
 2. Pelvic midplane
 3. Pelvic outlet plane
- 3) Consists of structures of hip, sacrum, sacral promontory, coccyx, ischial tuberosity, sacroiliac joints, iliopectic eminence, pubic symphysis, and the 4th, 5th, lumbar vertebrae, etc.

Packing: 10pcs/carton, 74x43x29cm, 11kgs





◀ TM-409 Newborn Model (Baby Model)

The size and configuration of these two models are almost as same as the normal newborn baby. The head, upper limbs, lower limbs and all joints are flexible. It can demonstrate the characteristic of the newborn baby and all kinds of operations in clinic education: includes different parturition method, newborn baby bath etc. Made of hard plastic, washable. Length: 52CM, head diameter: 34CM.

Packing: 10pcs/carton, 57x42x71cm, 13kgs



▶ TM-409A New Style Newborn Model (Baby Model)



◀ TM-409B Advanced Newborn Care Model (Boy / Girl)

This model shows realistic fontanels, coronal suture and parietal suture. Can place nasal and oral gastric tubes; rectal temperature measurements; training of bathing, lactation, lavage, etc. (Note: this model has infant boy, infant girl for choose.)

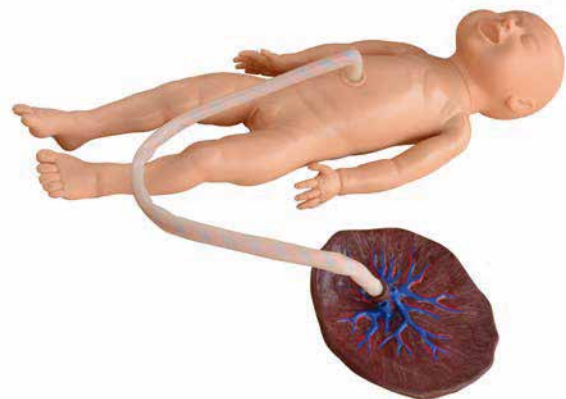
Packing: 1pcs/carton, 58x37x29cm, 8kgs



▶ TM-409C Advanced Neonate Umbilical Cord Nursing Model

- 1) Female newborn systemic model, moveable head and limbs
- 2) Realistic umbilical cord with umbilical vein and artery
- 3) Umbilical cord ligation and nursing, realistic touch feeling, the enough length of umbilical cord can be used continually
- 4) Neonatal basic nursing: lactation, sponge washing, wearing clothes, changing diapers.

Packing: 1pcs/carton, 65x18x16cm, 7kgs





TM-409D Tracheostomy Care Infant Model

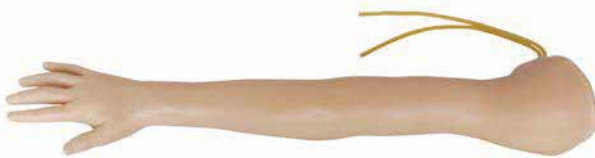
This model shows the whole baby body, with pharynx, epiglottis, trachea, esophagus, cricoid cartilage anatomical structures, etc.

Packing: 10pcs/carton, 57x42x71cm, 13kgs

TM-409E Neonate Scalp Venipuncture Model

This model has main veins of the scalp, including venae temporales superficial vein and venae frontales, can be used to infusion, injection and phlebotomy. There is obvious feeling when needle penetrates into the veins. Blood flashback indicates proper insertion.

Packing: 1pcs/carton, 37x24x12cm, 2kgs



TM-446B Advanced Child IV Training Arm

- 1) Simulate radial artery pulse by pulse bulb manually, and confirm the injection site
- 2) Provide trainings of radial artery puncture, haemospasia, transfusion; there is obvious feeling when needle penetrates into the vein, and blood flash back indicates accurate insertion.

Packing: 1pcs/carton, 65x18x16cm, 3kgs

TM-483 Advanced Infant Full Body Venipuncture Simulator

Features:

- 1) Venipuncture position in veins of head and neck
- 2) Venipuncture position in median cubital vein, axillary Vein, hand vein in right-left arm
- 3) Venipuncture position in umbilical cord, I.V, draw blood, Umbilical cord catheterization
- 4) Venipuncture position in right leg, including great saphenous vein, small saphenous vein, transfusion training
- 5) Buttocks Intramuscular Injection
- 6) Obviously outflow of simulated fluid return proves correct puncture position; a same puncture position can withstand hundreds of times repeated puncture but not leakage
- 7) Oral and nasal feeding, stomach intubation, suction, also training fixing nasogastric tube, dressings, purification, nursing.

Packing: 1pcs/carton, 44x17x35cm, 4kgs



► TM-481 Child Bone Marrow Puncture and Femoral Venous Puncture Model

- 1) Simulate child leg, flexible joint, can place the suitable operating position
- 2) Anatomic landmark clearly, knee joint, patella, tibia, tibial tuberosity
- 3) Replaceable puncture skin, Injection module, simulated tibia and femoral vein vessel
- 4) Femoral pulse is touchable to locate operation position
- 5) Outflow of simulated fluid proves correct puncture position (tibia puncture/ femoral venous puncture).



Packing: 1pcs/carton, 77x28x22cm, 8kgs

► TM-482 Infant Bone Marrow Aspiration Training Simulator

- 1) Simulate 6 month infant, Provide infant legs tibia puncture operation and realistic sense of needle; there is an obvious feeling when needle penetrates into veins and outflow of simulated bone marrow
- 2) Replaceable skin and tibia
- 3) Accessory: sealing paste for tibia puncture

Packing: 1pcs/carton, 37x20x27cm, 3kgs



◀ TM-484 Advanced infant venipuncture arm

Simulate infant left arm, life size, design soft skin, skeleton according to the anatomical characteristic of infant arm, hand can be bent, Made of imported plastic material.

Features:

- 1) There is obvious feeling when needle penetrates into the vein. And blood flash back indicates proper insertion
- 2) Provide trainings of hand back venipuncture, draw blood, blood transfusion
- 3) Skin and vein is replaceable.

Packing: 1pcs/carton, 38x20x28cm, 3kgs

► TM-485 Advanced infant venipuncture leg

Simulate infant left leg, and design the skeleton, skin, muscle blood vessel according to the anatomical characteristic of infant leg. The model is life size and made of imported plastic material.

Features:

- 1) There is obvious feeling when needle penetrates into the vein. And blood flash back indicates proper insertion
- 2) Provide trainings of instep venipuncture, great saphenous venipuncture, small saphenous venipuncture and heel puncture.

Packing: 1pcs/carton, 38x20x28cm, 3kgs



➤ **TM-501 Deluxe Acupuncture Model 178CM**
 ✓ **TM-502 Deluxe Acupuncture Model 84CM**

Highly illustrated and detailed, these two colorful models depict 14 Primary channels, 361 acupoints and 48 extraordinary acupoints on the right side, along with "CUN" markers for easy evaluation of distances between points. The left side is a subcutaneous view providing an invaluable look at the neural distribution, artery, vein, blood vessel and muscular structures. The left side also depicts upper and lower extremity "Extra" point not located on the Primary channels. Suitable for teaching and learning of Chinese medicine, acupuncture and massage etc. Copper color acupuncture model is available.

TM-501 Made of fiber glass. Size: 178CM.

TM-502 Made of PVC. Size: 84CM.

TM-501 Packing: 1pcs/carton, 128x45x59cm, 25kgs

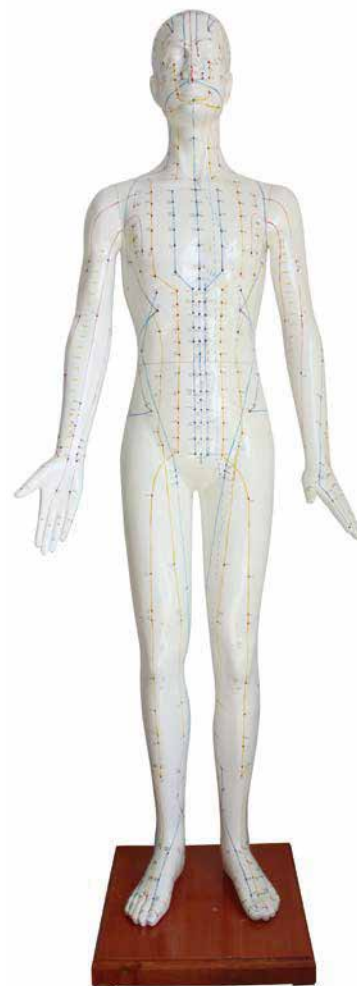
TM-502 Packing: 2pcs/carton, 89x38x47cm, 10kgs



▶ TM-501B Acupuncture Model 178CM

This acupuncture model is an ideal teaching aid. Carefully labeled with the appropriate pressure points and meridians of the ancient healing art. Made of fiber glass and mounted on a handsome wooden stand.

Packing: 1pcs/carton, 128x45x59cm, 25kgs



◀ TM-517A Acupuncture & Muscle Model 55CM Male

Packing: 10pcs/carton, 60x39x53cm, 16kgs



◀ TM-518A Acupuncture & Muscle Model 60CM Male

Packing: 10pcs/carton, 63x39x53cm, 23kgs

✓ TM-503 Acupuncture Model 50CM Male

✓ TM-504 Acupuncture Model 48CM Female

✓ TM-505 Acupuncture Model 46CM Male



These Chinese acupuncture models are ideal teaching aids. Each is carefully labeled with the appropriate pressure point and meridians of the ancient healing art. Made of soft PVC plastic.

Packing: 10pcs/carton, 53x39x52cm, 11kgs



◀ TM-518 Acupuncture Model 60CM Male

TM-502A Acupuncture Model 70CM ▶

This acupuncture model is an ideal teaching aid. Carefully labeled with the appropriate pressure points and meridians of the ancient healing art. Made of PVC plastic.

TM-502A Packing: 4pcs/carton, 77x61x37cm, 11kgs

TM-518 Packing: 10pcs/carton, 63x39x53cm, 16kgs



➤ TM-506 Acupuncture Model 26CM

This mini acupuncture model shows 14 meridians and 72 acupuncture points marked with Chinese characters or numerals. Ideal for elementary education of acupuncture therapy. Size: 26CM tall.

Packing: 20pcs/carton, 62x29x29cm, 9kgs



◀ TM-507A Life-size Head Acupuncture Model

These two models depict all important head and neck acupuncture channels and points. It also illustrates the Chinese Scalp Therapy insertion lines, selected "extra" points not found on the primary channels such as Yu Yao, Yin Tang, Tai Yang and the Facial Microsystem acupoints. Pamphlet describing the points is included.

TM-507 Packing: 30pcs/carton, 55x39x47cm, 13kgs

TM-507A Packing: 4pcs/carton, 64x47x46cm, 10kgs

◀ TM-507 Head Acupuncture Model

➤ TM-509 Hand Acupuncture Model 13CM

This model shows the location of 20 acupuncture points on the hand dorsum and 13 acupuncture points on the palm marked with Chinese characters or numerals. An English & Chinese pamphlet describing the points is included. Made of soft lustrous PVC.

Packing: 100pcs/carton, 58x37x29cm, 10kgs



◀ TM-511 Hand Model Illustrating Organs on the Points

This hand model demonstrating main functional parts in hand which correspond to main organs in human body. On wooden stand. Size: 20x12CM.

Packing: 30pcs/carton, 55x39x47cm, 13kgs

- TM-508A Ear Acupuncture Model 22CM
- TM-508B Ear Acupuncture Model 13CM
- TM-508C Ear Acupuncture Model 1:1
- TM-508D Ear Acupuncture Model 40CM

These series ear acupuncture models are made of PVC plastic, show the location of acupuncture points on the auricle reflecting the corresponding viscera and parts of human body. Pamphlet describing the points is included.

TM-508A Packing: 30pcs/carton, 55x39x47cm, 15kgs
 TM-508B Packing: 100pcs/carton, 58x37x29cm, 11kgs
 TM-508D Packing: 6pcs/carton, 55x47x53cm, 10kgs



➤ TM-510 Foot Acupuncture Model 13CM

This soft PVC foot acupuncture model shows the locations and indications of foot acupuncture points marked with Chinese characters or numerals.

Packing: 100pcs/carton, 53x39x51cm, 13kgs

➤ TM-515A Massage Foot Model 17CM

Packing: 30pcs/carton, 55x39x47cm, 11kgs



➤ TM-515B Massage Foot Model 12CM

Packing: 100pcs/carton, 50x35x40cm, 12kgs

➤ TM-514A Massage Ear Model 17CM

Packing: 50pcs/carton, 58x37x29cm, 9kgs



➤ TM-514B Massage Ear Model 12CM

Packing: 100pcs/carton, 58x37x29cm, 8kgs



➤ TM-601 Dog Acupuncture Model

This model shows 72 useful acupuncture points on right side of the dog body marked with numerals. Made of PVC plastic. Used for veterinarian's reference.

Packing: 10pcs/carton, 64x62x32cm, 13kgs



➤ TM-602 Horse Acupuncture Model

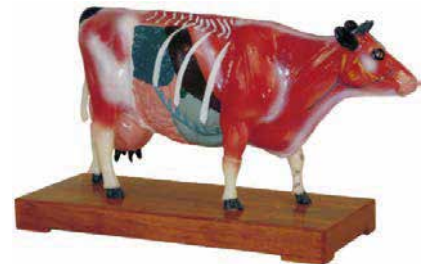
This model shows 114 useful acupuncture points on right side of the horse body marked with numerals. Made of PVC plastic. Used for veterinarian's reference.

Packing: 10pcs/carton, 54x53x30cm, 7kgs

➤ TM-603 Cattle Acupuncture Model

This model shows 68 useful acupuncture points on left side of the cattle body marked with numerals. Made of PVC plastic. Used for veterinarian's reference.

Packing: 10pcs/carton, 58x37x29cm, 6kgs



➤ TM-604 Pig Acupuncture Model

The right half of the model shows the constitution of a Shanghai white boar and 55 acupuncture points often used on the head, neck, buttock, tail and limbs. The left half shows the superficial layer muscles, and the longitudinal section of the dorsal vertebral column and the internal organs. Made of PVC plastic. Used for veterinarian's reference.

Packing: 12pcs/carton, 66x28x27cm, 5kgs

➤ TM-605 Cat Acupuncture Model

This model shows 36 useful acupuncture points on right side of the cat body marked with numerals. Made of PVC plastic. Used for veterinarian's reference.

Packing: 10pcs/carton, 50x49x34cm, 9kgs



➤ TM-705 Monocot Stem Structure

This model of a corn stem shows details of generalized monocot cellular anatomy in cross and longitudinal section. Shows important structures such as cuticle layer, epidermis, thick-walled mechanical tissue, fundamental parenchymous tissue and the details of closed vascular bundles.

Packing: 1pcs/carton, 47x46x18cm, 5kgs



◀ TM-706 Dicot Stem Structure

This model of a sunflower stem shows anatomy in cross, radial and tangential section. Shows epidermis, cork layer, phloem region, cambium, xylem region, pith and other important structures.

Packing: 2pcs/carton, 42x32x42cm, 7kgs

➤ TM-707 Leaf Structure

This model of a lima bean leaf vividly shows the transverse and longitudinal sections, as well as the upper and lower surfaces, of a typical leaf. The mesophyll includes palisade parenchyma and spongy parenchyma. Both surfaces are shown with stomata and guard cells. Vascular bundle detail is also shown, including xylem, phloem, and veins.

Packing: 4pcs/carton, 52.5x47x36cm, 10kgs

